



Republic of the Philippines  
**Department of Education**  
REGION IV-A CALABARZON



PPRD-RM-2025-265

7 April 2025

**Regional Memorandum**  
No. 265, s. 2025

**DISSEMINATION OF GUIDELINES AND OTHER PERTINENT  
INFORMATION ON THE CONDUCT OF THE NATIONAL  
SCHOOL BUILDING INVENTORY (NSBI)  
FOR SY 2024-2025**

To **Schools Division Superintendent**  
**All Others concerned**

1. In reference to the attached Joint Memorandum from the Offices of the Undersecretary for Strategic Management and Undersecretary for Human Resource and Organizational Development, dated March 28, 2025, this Office hereby disseminates the guidelines for compliance by all governance levels within the prescribed timeline.
2. As emphasized in the memorandum, the NSBI datasets play a crucial role in ensuring the delivery of quality basic education services. Therefore, the implementation of the guidelines must adhere to the established minimum standards. This must be done in compliance with DepEd Order No. 9, s. 2022. To ensure proper execution, the Implementation Plan and Monitoring & Evaluation (M&E) Plan for NSBI SY 2024-2025 must be secured.
3. In this regard, all Schools Division Offices are requested to furnish the Regional Office of the approved *ImPlan* and *M&E Plan* through the following link: **[bit.ly/R4aSystem-ImPlan-MnEPlan](https://bit.ly/R4aSystem-ImPlan-MnEPlan)**, preferably before the implementation date.
4. Additionally, the progress of each Schools Division Office can be tracked via: **[bit.ly/R4a-ONELINK](https://bit.ly/R4a-ONELINK)**. The status will provide insight into each SDO's progress and the overall regional status.
5. For clarifications and other related concerns, please contact **Mr. Adrian A. Bullo** of the Policy, Planning and Research Division (PPRD) and/or **Engr. Jamaica Rose G. Rolloque** of the Education Support Services Division (ESSD) via email at [pprd.calabarzon@deped.gov.ph](mailto:pprd.calabarzon@deped.gov.ph) and [essd.calabarzon@deped.gov.ph](mailto:essd.calabarzon@deped.gov.ph), respectively.



Address: Gate 2, Karangalan Village, Cainta, Rizal  
Telephone No.: 02-8682-2114  
Email Address: [region4a@deped.gov.ph](mailto:region4a@deped.gov.ph)  
Website: [depedcalabarzon.ph](http://depedcalabarzon.ph)



Certificate No. PHP QMS  
22 93 0085

6. Strict compliance with this memorandum is earnestly desired.

  
ATTY. ALBERTO T. ESCOBARTE, CESO II  
Regional Director

cc: PPRD/ROP4





Republic of the Philippines  
**Department of Education**  
**OFFICE OF THE UNDERSECRETARY FOR STRATEGIC MANAGEMENT**  
(POLICY, PLANNING, AND MONITORING & EVALUATION)

---

**JOINT MEMORANDUM**

**FOR :** MINISTER, BASIC, HIGHER AND TECHNICAL EDUCATION  
BARM  
REGIONAL DIRECTORS  
SCHOOLS DIVISION SUPERINTENDENTS  
ALL OTHERS CONCERNED

**FROM :** RONALD U. MENDOZA, Ph.D.  
Undersecretary for Strategic Management

**WILFREDO E. CABRAL**  
Undersecretary for Human Resource and Organizational  
Development

**SUBJECT :** GUIDELINES ON THE CONDUCT OF THE NATIONAL  
SCHOOL BUILDING INVENTORY (NSBI) FOR SY 2024-2025

**DATE :** 28 March 2025

---

The Department of Education (DepEd) aims to provide conducive learning environment as this contributes to better learning outcomes through adequate school buildings, classrooms, other infrastructure, and facilities in public schools. To strategically allocate its resources for school facilities, the Department maintains a complete and accurate inventory of school infrastructure and facilities which informs planning, budgeting, resource allocation, and decision making.

In this regard, the National School Building Inventory (NSBI) will be updated for SY 2024-2025 consistent with DepEd Order No. 1, s. 2017, otherwise known as the Guidelines on the National Inventory of DepEd Public School Buildings for SY 2016-2017. This memorandum outlines the guidelines for the conduct of the NSBI, including the procedures, roles and responsibilities, and timelines. All public schools are required to comply and actively participate in collecting and encoding NSBI data in the information system, guided and assisted by the Schools Division Offices.

## I. PROCEDURES

In order to collect, encode, and report high-quality data in the NSBI module, personnel at the school level, specifically the school head, shall observe the following:

- a. The school head conducts the school building inventory and reviews, encodes, and validates the data in the system.
- b. Submit two (2) signed copies of duly accomplished forms to the Schools Division Office (SDO), Attention: Division Engineer. These copies should be generated from the NSBI, newly available in the system.

Should there be errors in encoding the data in the system, the School Head shall update the data for accuracy and reliability. Take note that schools and DepEd offices benefit from correct and updated data, especially in producing an equitable allocation of resources and evidence-based policies.

## II. ROLES AND RESPONSIBILITIES

The following are the roles and responsibilities of concerned DepEd personnel across governance levels:

OFFICE OR PERSONNEL	ROLES/RESPONSIBILITIES
<b>DEPED CENTRAL OFFICE</b>	
Education Facilities Division, Policy and Planning Service-Education Management Information System Division	Provide technical assistance on the implementation and orientation of Regions and SDOs on the NSBI
Information and Communications Technology Service (ICTS)-Solutions Development Division (SDD)	Develop, maintain, and update the system to ensure that it functions according to purpose and can be accessed by all intended users
Information and Communications Technology (ICTS)-User Support Division (USD)	Provide technical assistance in terms different NSBI system concerns
<b>REGIONAL OFFICE</b>	
Policy, Planning and Research Division (PPRD) and Education Support Services Division	Monitor status of submissions of SDOs
	Provide technical assistance on the implementation for all SDOs
<b>DIVISION OFFICE</b>	
School Governance Operations Division-Planning and Research Section (SGOD-PRS); SGOD-Division Engineer	Provide technical assistance to schools on queries regarding NSBI forms, system, and processes
	Create Basic Education Information System (BEIS) accounts for Engineers (Plantilla) with editing facilities <i>(provided that necessary clearances from School Head and SGOD are secured)</i>

OFFICE OR PERSONNEL	ROLES/RESPONSIBILITIES
	For SDOs without Plantilla engineers, the PRS shall create an account for the SGOD Chief.
	Monitor and validate submissions of schools
SCHOOL LEVEL	
School Head	Conduct accurate school building inventory
	Submit signed NSBI forms to SGOD
	Encode the data in the National School Building Inventory System

### III. NSBI FORMS

The NSBI Data still consist of eight (8) tables.

Table	Title
Table 1	Summary of Existing Building
Table 2	Existing Rooms
Table 3	Number of Temporary Learning Spaces (TLS) & Makeshift Rooms
Table 4a	Existing Number of Water and Sanitation Facilities
Table 4b	Existing Number of Stand-Alone Water and Sanitation Facilities
Table 5	Existing Number of Usable Furniture
Table 6	Other Facilities or Amenities
Table 7	Access Going to School

Generated NSBI Data Gathering Forms shall be signed by the following school and division personnel attesting the accuracy and veracity of the encoded and reported data in both printed copy and in the system, as shown below:

DIVISION LEVEL	
PERSONNEL	RESPONSIBILITY
Division Engineer	Site Validation
Planning Officer	System Verifier
SCHOOL LEVEL	
School Head	NSBI Data Gathering Forms
	System Validation

### IV. PROCESS IN DETERMINING THE SCHOOL COORDINATES (LATITUDE/LONGITUDE)

In determining the school coordinates, the location of the flagpole shall serve as the reference point. The School Head may use devices such as mobile phones, smartphones (iOS or Android phones), tablets, or laptops to open Google Maps and identify the latitude and longitude of the school to ensure accuracy of the information or data.

Using smartphones or tablets:

1. Turn on the GPS on your device.
2. Open Google Maps.
3. Navigate the location you want to find the coordinates. You can scroll and zoom to locate it.
4. Tap and hold on the specific location. A red pin will appear at the determined location.
5. The coordinates will appear on the search bar; then, copy or take a screenshot of the coordinates.
6. Please check the attached Annex A for example.

Using laptops:

1. Open your browser (Google Chrome, Mozilla Firefox, or any other browser).
2. Type Google Maps in the Search bar.
3. Navigate to the location you want to determine the coordinates. Use the scroll wheel to zoom in / out of the location.
4. Right-click on the location.
5. Click on the coordinates and copy them.
6. Please check the attached Annex B for example.

Please get the whole decimal number and not to round-off since each numeral number corresponds to a certain kilometer. You may verify the accuracy of the school location obtained by inserting the determined school coordinates, by latitude and longitude, in the google maps. For examples in google, please see annex A.

## **V. VALIDATION PROCESS**

The validation of NSBI data shall be conducted by the Division Engineers through field visit. For the Planning Officer, completeness of submission shall be its responsibility. The criteria or quota for the data validation through field visit of the engineers is **at least 50 schools**. Hence, Divisions with less than 50 schools shall visit all.

For effective targeting of the schools to be validated, random selection was adopted. The list of the schools to be validated by the DepEd Engineers are specified in this link: [\*\*https://bit.ly/RandomSchools NSBIValidation\*\*](https://bit.ly/RandomSchoolsNSBIValidation). To ensure accountability and transparency of field validation, the process of validation shall be as follows:

1. Engineers will visit the schools under the list;
2. A generated and printed report from the system will be the basis in validating the school data;
3. If there are encoded data that needs to be corrected, the school head shall be notified by the engineer for appropriate action; and
4. A report on the field validation, together with a geotagged photo of engineers will be uploaded here: [\*\*https://bit.ly/EngineerReportNSBI2025\*\*](https://bit.ly/EngineerReportNSBI2025). Use DepEd Microsoft Account to access, as uploading photos is required in this form.

## VI. TIMELINES

The timelines for all the activities relative to the NSBI updating is as follows:

Activity	Timeline
Orientation on NSBI for SY 2024-2025  <i>For Region and SDO Engineers and Planning Officers, join online through MS teams: <b>Please register here to get the online link:</b> <a href="https://bit.ly/RegFormNSBI2025Orientation">https://bit.ly/RegFormNSBI2025Orientation</a>.</i>  <i>For all school heads, Facebook Live will be available at <b>DepEd Philippines</b> Facebook page.</i>  The orientation will be from <b>10:00 AM to 12:00 PM</b> .	April 10, 2025
Encoding	Starts on April 21, 2025  <i>Encoding of updated data will be open all year round to establish live updates.</i>
Submission of printed copies to the Division Office	May 14-20, 2025
Cut-off dates for data generation	Last working day of May, July, September, and December
Validation of NSBI Data (including the field validation of engineers)	May 2-30, 2025

To establish capacity of schools in continually updating its data, the NSBI will be open for encoding all throughout the year. Latest data of each school will also be based on the latest submission during the cut-off dates provided above.

## VII. MONITORING AND EVALUATION

The Policy, Planning, and Research Division (PPRD) through the Regional Planning Officer (RPO) shall monitor the status of submission by Schools Division Offices (SDO) and the Regional Engineers shall monitor the submission of SDO engineer's field validation report. The SDOs shall also monitor the schools under their respective jurisdiction. In addition, the Division Planning Officer (DPO) and the Division Engineer shall provide necessary support in the form of technical assistance to schools with difficulties in encoding NSBI data.

The DepEd Central office, through the Education Facilities Division and Planning Service-Education Management Information System Division (PS-EMISD) shall inform all Regions and Divisions their respective statuses of submission and validation in coordination with the Regional Planning Officer.

## **VIII. CONTACT SUPPORT**

Should there be a need for assistance from the Central Office, the following contact numbers can be contacted depending on the concern:

**Education Facilities Division:** Engineering or infrastructure-related concerns

Landline: (+63) 28 633 7263 / (+63) 28 638 7110 / (+63) 28 636 4877

Email: [efd@deped.gov.ph](mailto:efd@deped.gov.ph)

**Policy and Planning Service - Education Management Information System Division (PS-EMISD):** Data-related concerns on NSBI

Landline: (+63) 28 638 2251 / (+63) 28 635 3986

Email: [ps.emisd@deped.gov.ph](mailto:ps.emisd@deped.gov.ph)

**Information and Communication Technology Service - User Support Division (ICTS-USD):** NSBI system-related concerns

Landline: (+63) 28 636 4878 / (+63) 28 633 2658

Mobile: (+63) 939 436 1390 (SMART) / (+63) 977 771 2285 (GLOBE)

Email: [support.ebeis-lis@deped.gov.ph](mailto:support.ebeis-lis@deped.gov.ph) / [icts.usd@deped.gov.ph](mailto:icts.usd@deped.gov.ph)

Facebook: [www.facebook.com/groups/lis.helpdesk/](https://www.facebook.com/groups/lis.helpdesk/)



## Annex A

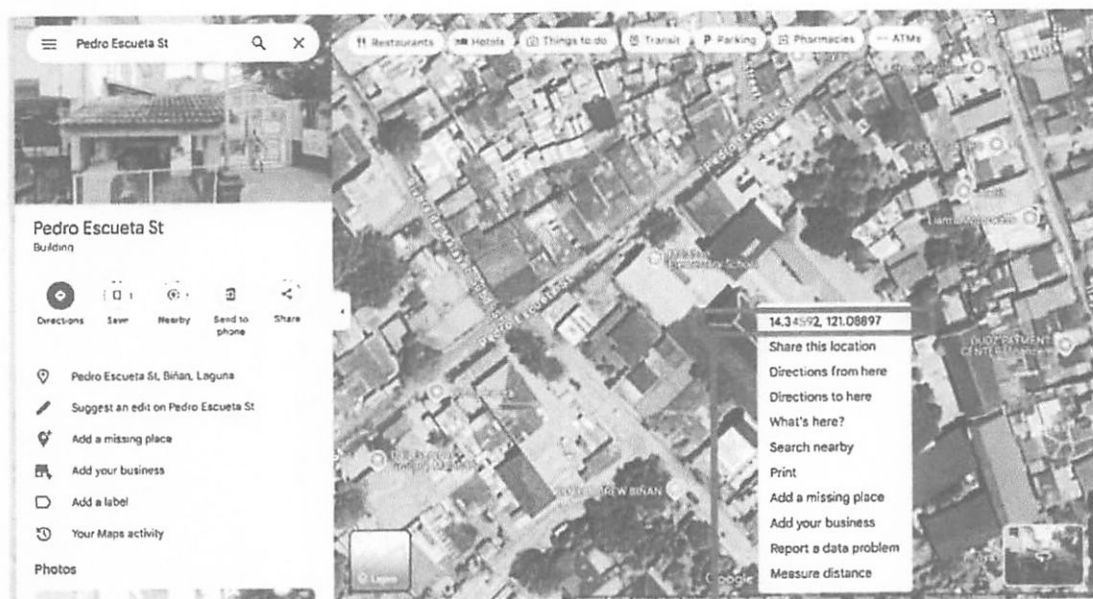
### Latitude and Longitude from Google Maps using smart phones or tablets



By pressing the location, these numbers will appear which are the latitude and longitude. Click the numbers to copy the complete decimal point of the location.

## Annex B

### Latitude and Longitude from Google Maps using Laptop or Desktop



**Latitude:** 14.345919640124663,  
**Longitude:** 121.08897296249603

Click on the center of the school then right click the red pin and click these coordinates to copy the exact numerical values **WITHOUT** rounding off for a more accurate GPS location.