

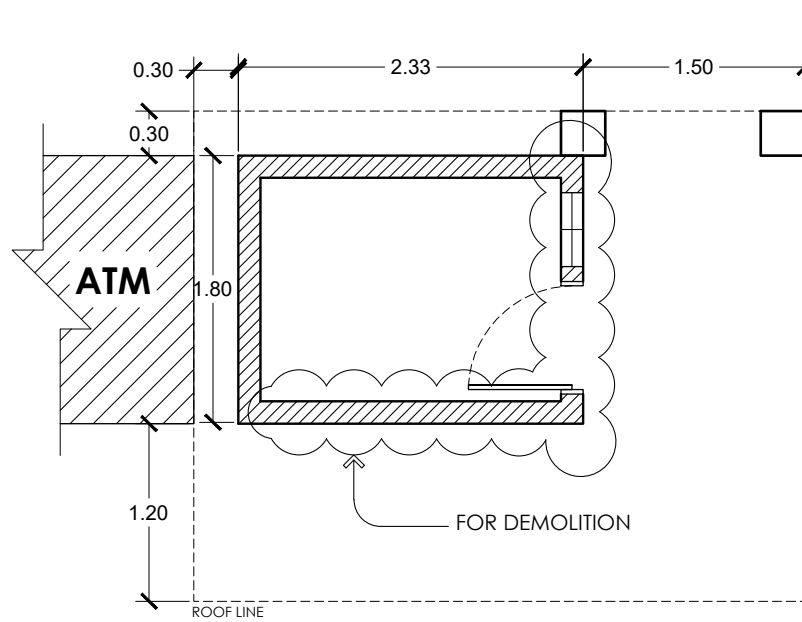
PROPOSED
VARIOUS
IMPROVEMENT
AND REPAIR
AT DEPED
REGION IV-A

TABLE OF CONTENTS

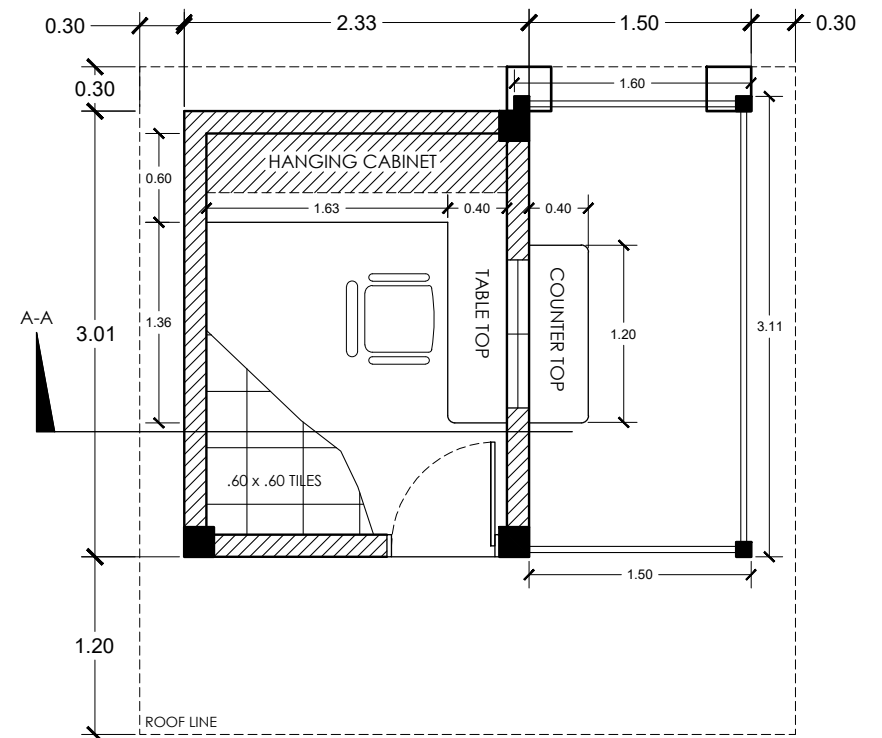
| | |
|---|----------------------------|
| SHEET CONTENTS: GUARD HOUSE PERSPECTIVE DRAWING GUARD HOUSE EXISTING FLOOR PLAN GUARD HOUSE PROPOSED FLOOR PLAN DETAILS OF FIXTURES FRONT ELEVATION REAR SIDE ELEVATION R. SIDE ELEVATION L. SIDE ELEVATION SECTION THRU A - A | SHEET NO. <div>1</div> |
| SHEET CONTENTS: GUARD HOUSE CEILING PLAN GUARD HOUSE ROOF FRAMING PLAN GUARD HOUSE ROOF PLAN GUARD HOUSE ROOF ELEVATION COLUMN FOOTING (CF1/C1) GUARD HOUSE ELECTRICAL PLAN GUARD HOUSE FOUNDATION PLAN STOCK ROOM GATE | SHEET NO. <div>2</div> |
| SHEET CONTENTS: CANTEEN & DRIVERS LOUNGE PERSPECTIVE DRAWING DRIVERS LOUNGE & CANTEEN FLOOR PLAN L. SIDE ELEVATION R. SIDE ELEVATION FRONT ELEVATION | SHEET NO. <div>3</div> |
| SHEET CONTENTS: DRIVERS LOUNGE & CANTEEN ROOF PLAN DRIVERS LOUNGE & CANTEEN ROOF FRAMING PLAN | SHEET NO. <div>4</div> |
| SHEET CONTENTS: DRIVERS LOUNGE & CANTEEN ELECTRICAL PLAN DRIVERS LOUNGE & CANTEEN FOUNDATION PLAN DRIVERS LOUNGE & CANTEEN POST & FOOTING DETAIL | SHEET NO. <div>5</div> |
| SHEET CONTENTS: GROUND FLOOR C.R. SECOND FLOOR C.R. TYPICAL COMFORT ROOM SECTION TYPICAL COMFORT ROOM SECTION DENTAL ROOM LAYOUT DENTAL ROOM ELECTRICAL LAYOUT | SHEET NO. <div>6</div> |
| SHEET CONTENTS: PERIMETER VEGETATION PLAN FLAG POLE PLAN | SHEET NO. <div>7</div> |
| SHEET CONTENTS: 2ND FLOOR CUBICLE LAYOUT 3RD FLOOR CUBICLE LAYOUT | SHEET NO. <div>8</div> |
| SHEET CONTENTS: 2ND FLOOR ELECTRICAL LAYOUT 3RD FLOOR ELECTRICAL LAYOUT | SHEET NO. <div>9</div> |
| SHEET CONTENTS: OFFICE OF THE ASSISTANT REGIONAL DIRECTOR RENOVATION ADDITIONAL CUBICLE FOR CLMD | SHEET NO. <div>10</div> |
| SHEET CONTENTS: SECOND FLOOR LEFT WING CUBICLE PARTITION PLAN & ELECTRICAL PLAN | SHEET NO. <div>11</div> |
| SHEET CONTENTS: SECOND FLOOR RIGHT WING CUBICLE PARTITION PLAN | SHEET NO. <div>12</div> |
| SHEET CONTENTS: SECOND FLOOR RIGHT WING ELECTRICAL PLAN | SHEET NO. <div>13</div> |
| SHEET CONTENTS: GENERATOR SET HOUSE ARCHITECTURAL PLANS | SHEET NO. <div>14</div> |
| SHEET CONTENTS: FOUNDATION PLAN 2ND FLOOR FRAMING PLAN ROOF FRAMING PLAN SCHEDULE OF COLUMN FOOTING SCHEDULE OF BEAMS BEAM DETAIL TYPICAL SLAB ELEVATION | SHEET NO. <div>15</div> |
| SHEET CONTENTS: ROOD PLAN ROOF FRAMING PLAN ROOF FRAMING ELEVATION GEN. SET HOUSE ELECTRICAL PLAN ELECTRICAL POST STRUCTURAL DETAIL | SHEET NO. <div>16</div> |



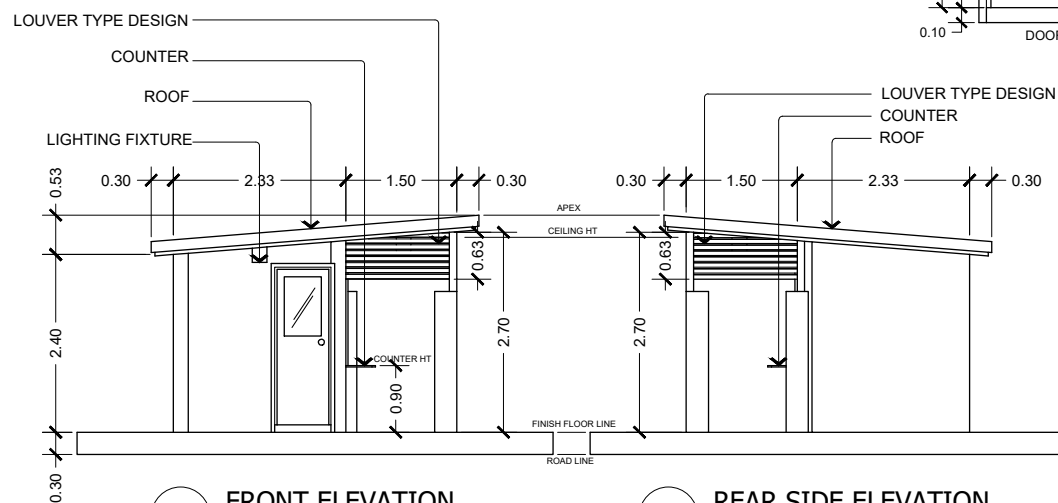
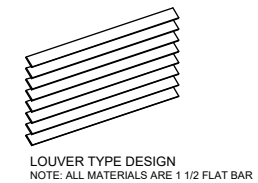
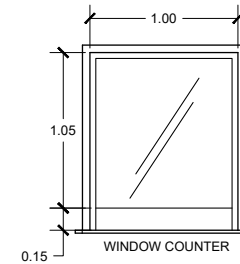
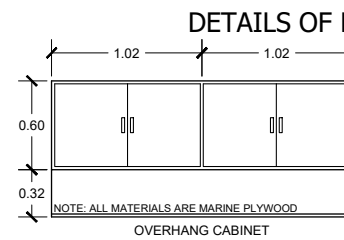
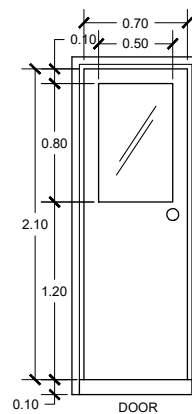
GUARD HOUSE PERSPECTIVE DRAWING
NOT TO SCALE



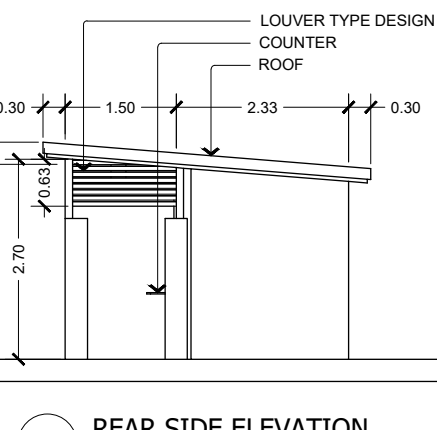
GUARD HOUSE
EXISTING FLOOR PLAN
SCALE : 1 : 50 m



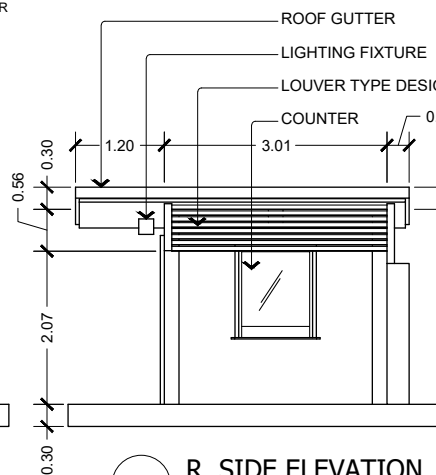
GUARD HOUSE
PROPOSED FLOOR PLAN
SCALE : 1 : 50 m



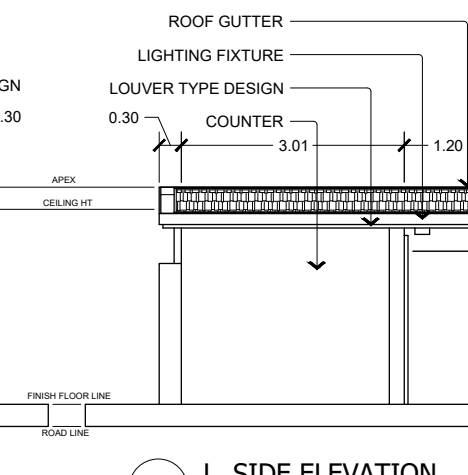
FRONT ELEVATION
SCALE : 1 : 100 m



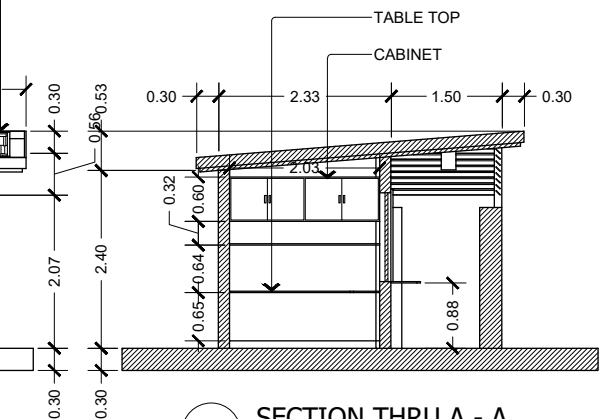
REAR SIDE ELEVATION
SCALE : 1 : 100 m



R. SIDE ELEVATION
SCALE : 1 : 100 m

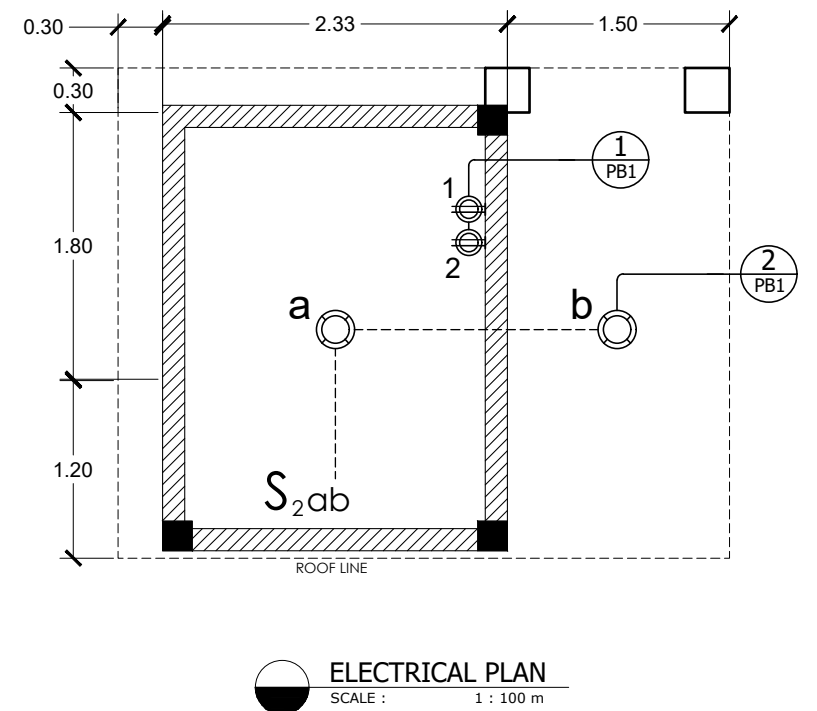
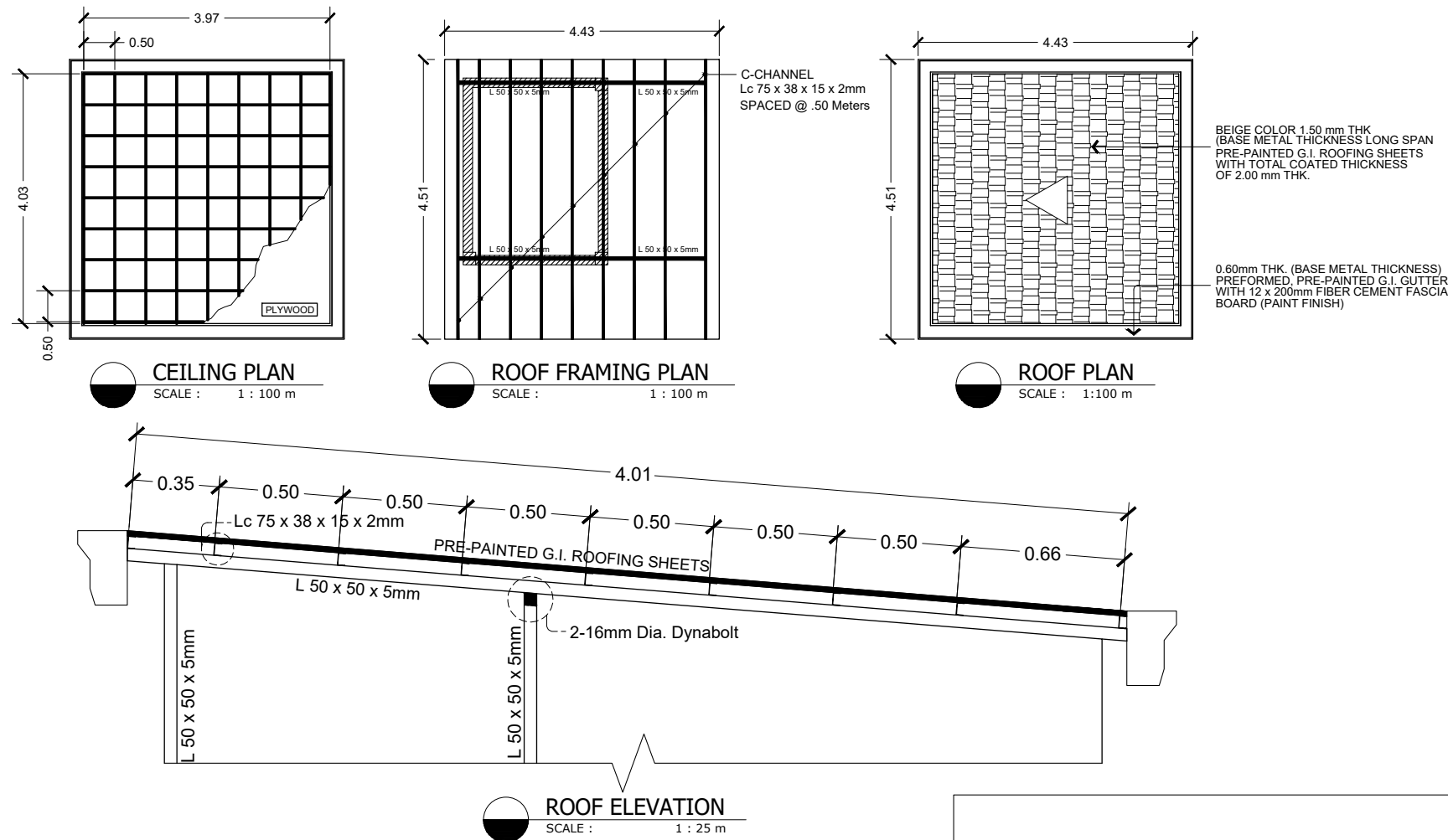


L. SIDE ELEVATION
SCALE : 1 : 100 m

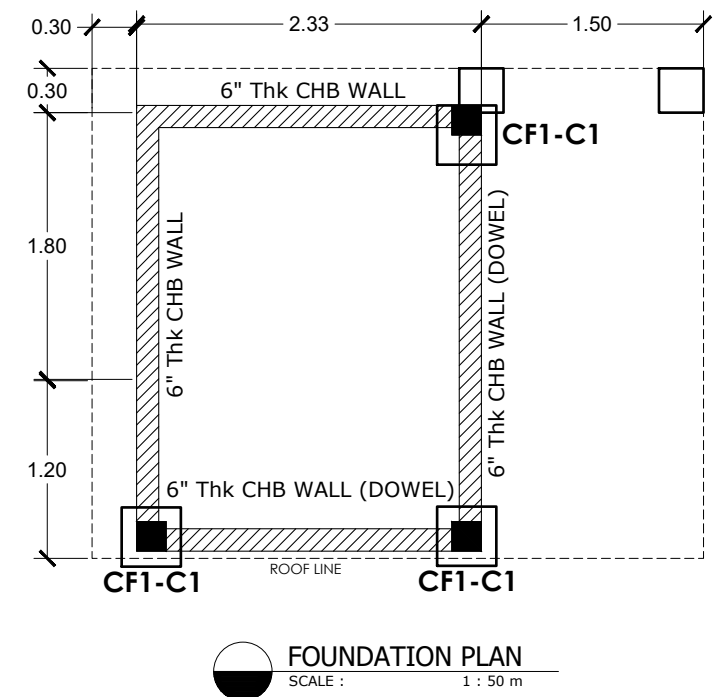
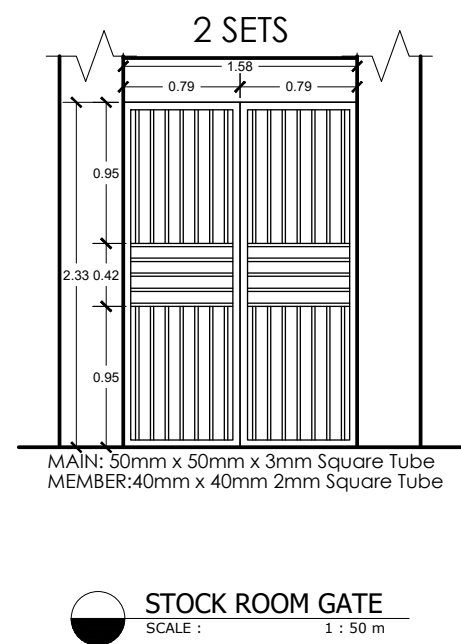
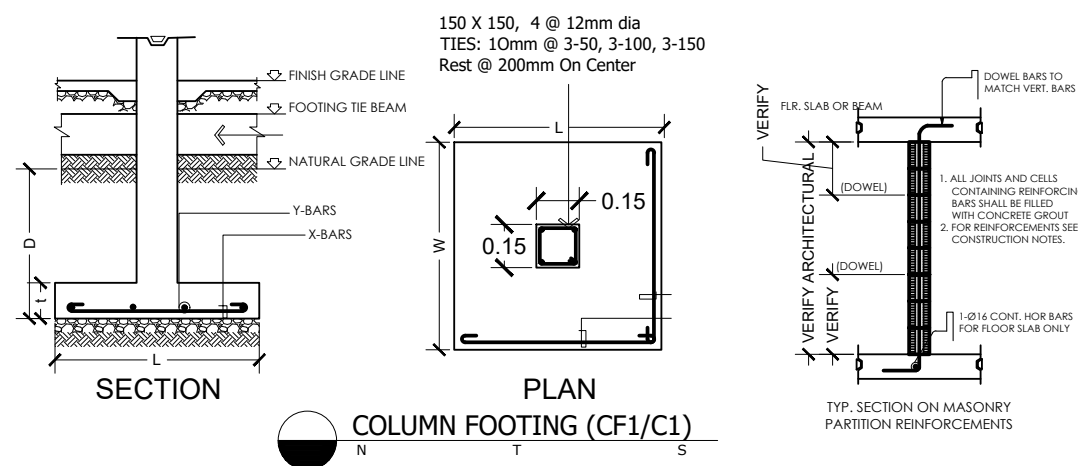


SECTION THRU A - A
SCALE : 1 : 100 m

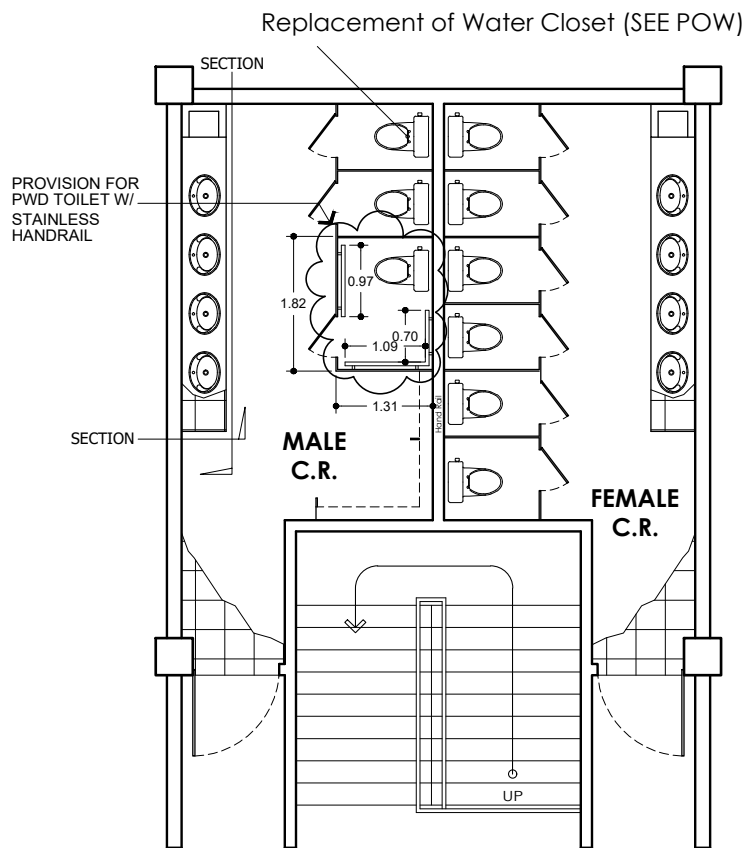
| | | | | | | | |
|---|---|--|---|--|---|--|---------------------------|
| <p>Republic of the Philippines</p> <p>DepED</p> <p>DEPARTMENT OF EDUCATION REGIONAL OFFICE IV-A (CALABARZON) Karanglan Village, Gate 11, Cavite, Rizal</p> | <p>PREPARED BY:</p> <p>SIGNED EMIL O. REAMBILLO Draftsman II</p> | <p>CHECKED BY:</p> <p>SIGNED ENGR. ROBERT B. PEREZ Engineer III</p> | <p>RECOMMENDING APPROVAL:</p> <p>SIGNED EDUARDA M. ZAPANTA Chief Education Support Services Division</p> | <p>APPROVED:</p> <p>SIGNED WILFREDO E. CABRAL Regional Director Office of the Regional Director</p> | <p>PROJECT:</p> <p>PROPOSED VARIOUS IMPROVEMENT AND REPAIR AT DEPED REGION IV-A</p> | <p>SHEET CONTENTS:</p> <p>GUARD HOUSE PERSPECTIVE DRAWING GUARD HOUSE EXISTING FLOOR PLAN GUARD HOUSE PROPOSED FLOOR PLAN DETAILS OF FIXTURES FRONT ELEVATION REAR SIDE ELEVATION R. SIDE ELEVATION L. SIDE ELEVATION SECTION THRU A - A</p> | <p>SHEET NO.</p> <p>1</p> |
|---|---|--|---|--|---|--|---------------------------|



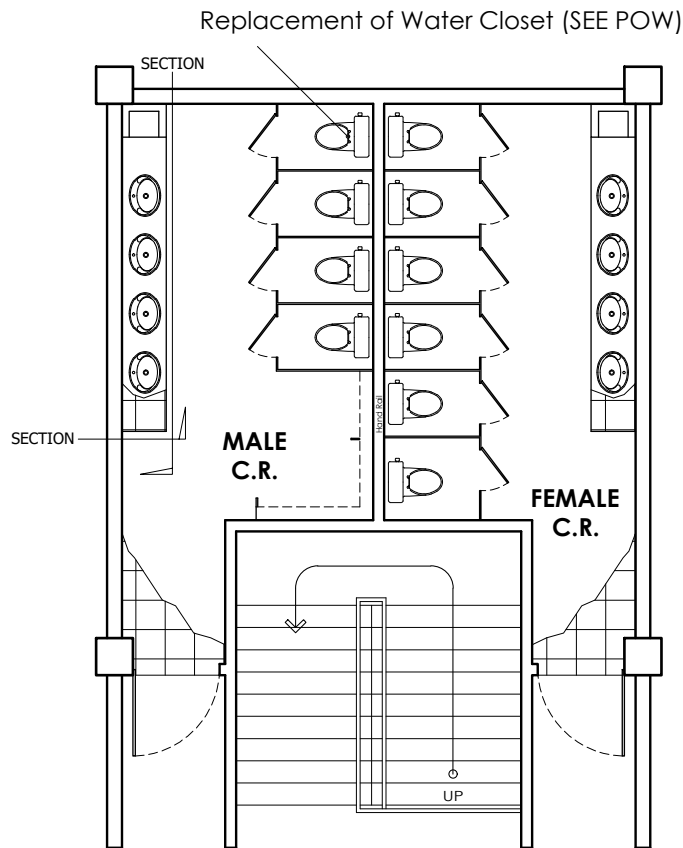
| SCHEDULE OF COLUMN FOOTING | | | | | | | | | |
|----------------------------|--------------------------------|-------|-------|-----|---------------|-------|-------|-----------|----------------|
| COLUMN FOOTING MARK | Column Footing Dimensions (mm) | | | | Reinforcement | | | | Remarks |
| | Length | Width | Depth | Thk | Bar X | Bar Y | Bar X | Bar Y | |
| CF-1 | 400 | 400 | 300 | 200 | 4 - 12mmØ | 0 | 0 | 4 - 12mmØ | Square Footing |



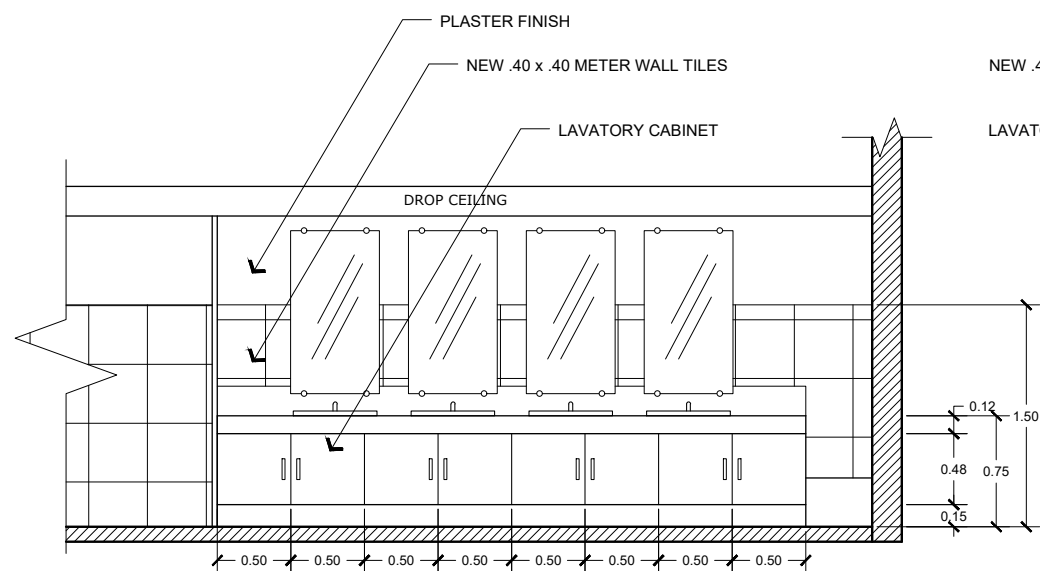
| | | | | | | | |
|--|--|---|--|--|---|--|---------------------------|
| <p>Republic of the Philippines</p> <p>DepED</p> <p>DEPARTMENT OF EDUCATION</p> <p>REGIONAL OFFICE IV-A (CALABARZON)</p> <p>Karangalan Village, Gate 11, Caraga, Ror</p> | <p>PREPARED BY:</p> <p>SIGNED</p> <p>EMIL O. REAMBILLO</p> <p>Draftsman II</p> | <p>CHECKED BY:</p> <p>SIGNED</p> <p>ENGR. ROBERT B. PEREZ</p> <p>Engineer III</p> | <p>RECOMMENDING APPROVAL:</p> <p>SIGNED</p> <p>EDUARDA M. ZAPANTA</p> <p>Chief Education Support Services Division</p> | <p>APPROVED:</p> <p>SIGNED</p> <p>WILFREDO E. CABRAL</p> <p>Regional Director</p> <p>Office of the Regional Director</p> | <p>PROJECT:</p> <p>PROPOSED VARIOUS IMPROVEMENT AND REPAIR AT DEPED REGION IV-A</p> | <p>SHEET CONTENTS:</p> <p>GUARD HOUSE CEILING PLAN</p> <p>GUARD HOUSE ROOF FRAMING PLAN</p> <p>GUARD HOUSE ROOF PLAN</p> <p>GUARD HOUSE ROOF ELEVATION</p> <p>COLUMN FOOTING (CF1/C1)</p> <p>GUARD HOUSE ELECTRICAL PLAN</p> <p>GUARD HOUSE FOUNDATION PLAN</p> <p>STOCK ROOM GATE</p> | <p>SHEET NO.</p> <p>2</p> |
|--|--|---|--|--|---|--|---------------------------|



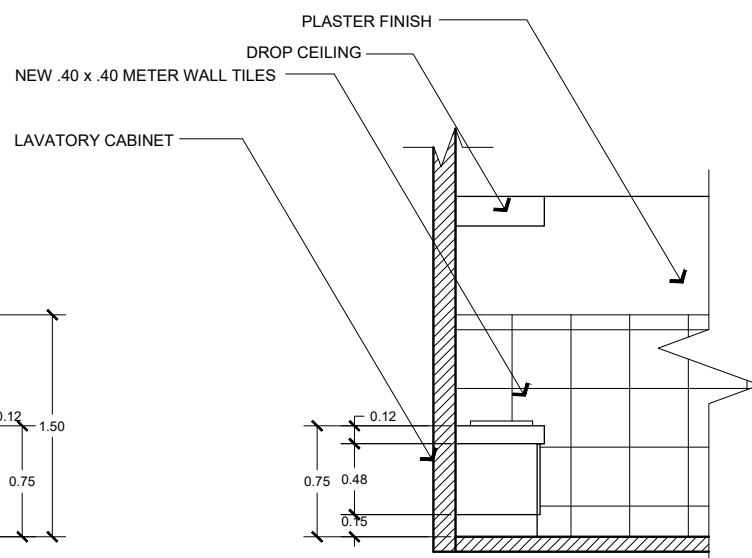
GROUND FLOOR C.R.
SCALE : 1 : 100 m



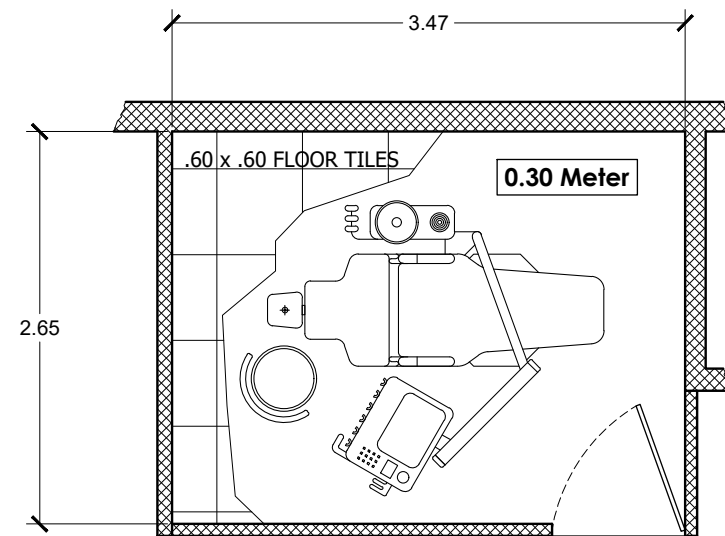
SECOND FLOOR C.R.
SCALE : 1 : 100 m



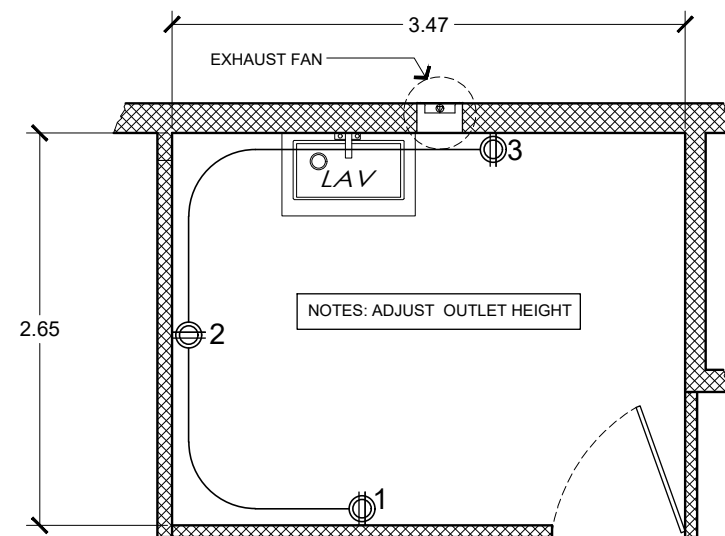
TYPICAL COMFORT ROOM SECTION
SCALE : 1 : 50 m



TYPICAL COMFORT ROOM SECTION
SCALE : 1 : 50 m



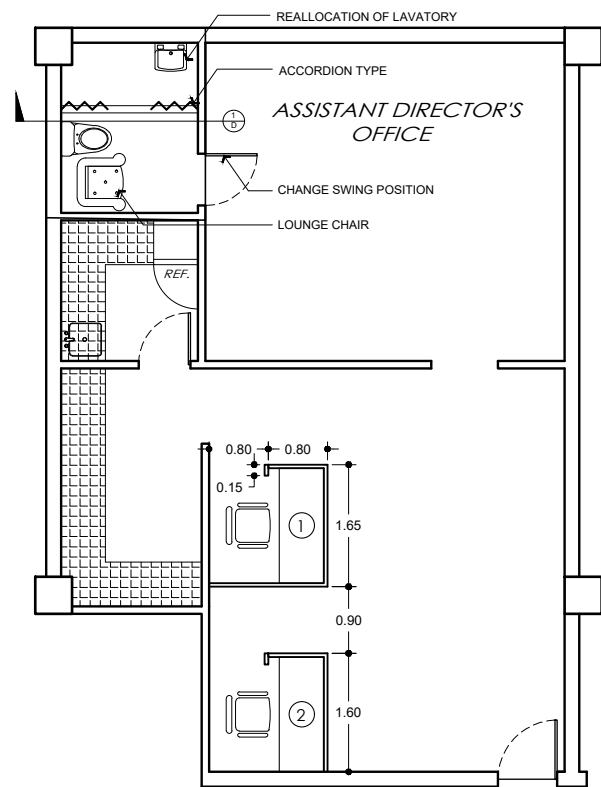
DENTAL ROOM LAYOUT
SCALE : 1 : 50 m



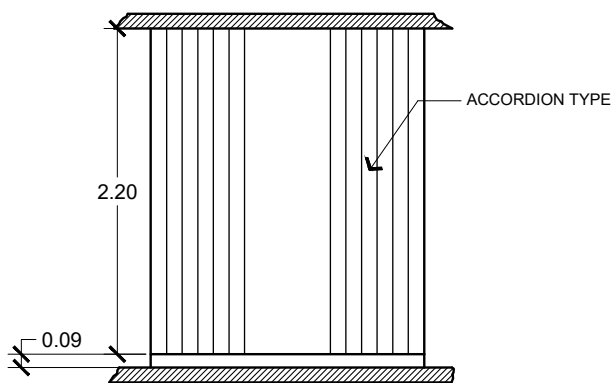
DENTAL ROOM ELECTRICAL LAYOUT
SCALE : 1 : 50 m

| | | | | | | | |
|---|--|---|--|---|---|---|----------------------------------|
| <p>Republic of the Philippines</p> <p>DepED</p> <p>DEPARTMENT OF EDUCATION</p> <p>REGIONAL OFFICE IV-A (CALABARZON)</p> <p>Karagligan Village, Gate 11, Cavite, Raul</p> | <p>PREPARED BY:</p> <p>SIGNED</p> <p>EMIL O. REAMBILLO</p> <p>Draftsman II</p> | <p>CHECKED BY:</p> <p>SIGNED</p> <p>ENGR. ROBERT B. PEREZ</p> <p>Engineer III</p> | <p>RECOMMENDING APPROVAL:</p> <p>SIGNED</p> <p>EDUARDA M. ZAPANTA</p> <p>Chief Education Support Services Division</p> | <p>APPROVED:</p> <p>SIGNED</p> <p>FRANCIS CESAR B. BRINGAS</p> <p>Regional Director Office of the Regional Director</p> | <p>PROJECT:</p> <p>PROPOSED VARIOUS IMPROVEMENT AND REPAIR AT DEPED REGION IV-A</p> | <p>SHEET CONTENTS:</p> <p>GROUND FLOOR C.R. SECOND FLOOR C.R. TYPICAL COMFORT ROOM SECTION DENTAL ROOM LAYOUT DENTAL ROOM ELECTRICAL LAYOUT</p> | <p>SHEET NO.</p> <p>6</p> |
|---|--|---|--|---|---|---|----------------------------------|

OFFICE OF THE ASSISTANT REGIONAL DIRECTOR



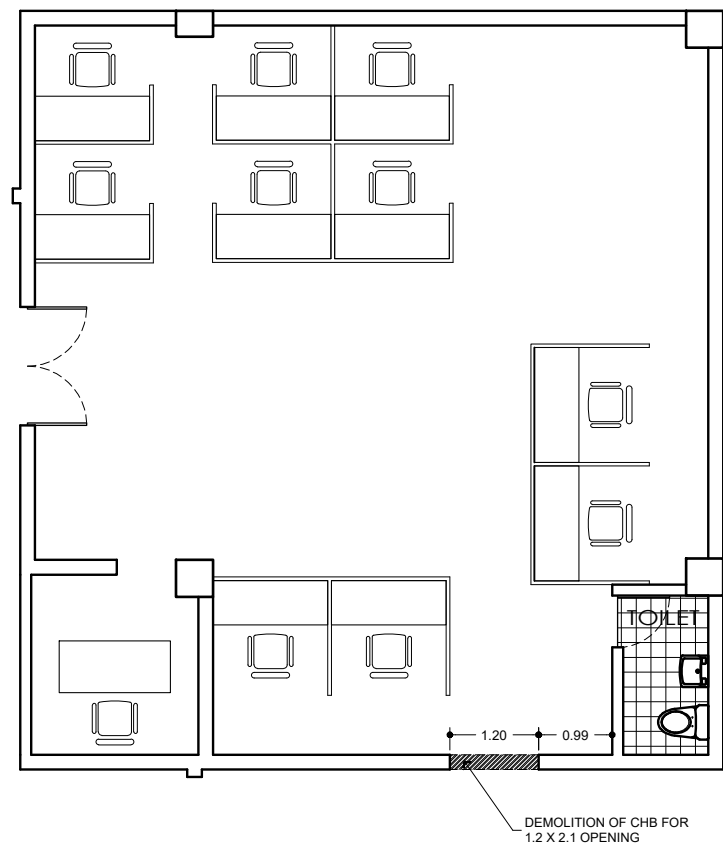
TOILET PLAN RENOVATION
SCALE : 1 : 100 m



1
D ACCORDION ELEVATION
SCALE : 1 : 50 m

- CONSTRUCTION NOTES:
- 1. Repainting Toilet Ceiling
 - 2. Reallocation of Lavatory
 - 3. Installation of Accordion
 - 4. Change door swing position

CURRICULUM AND LEARNING MANAGEMENT DIVISION



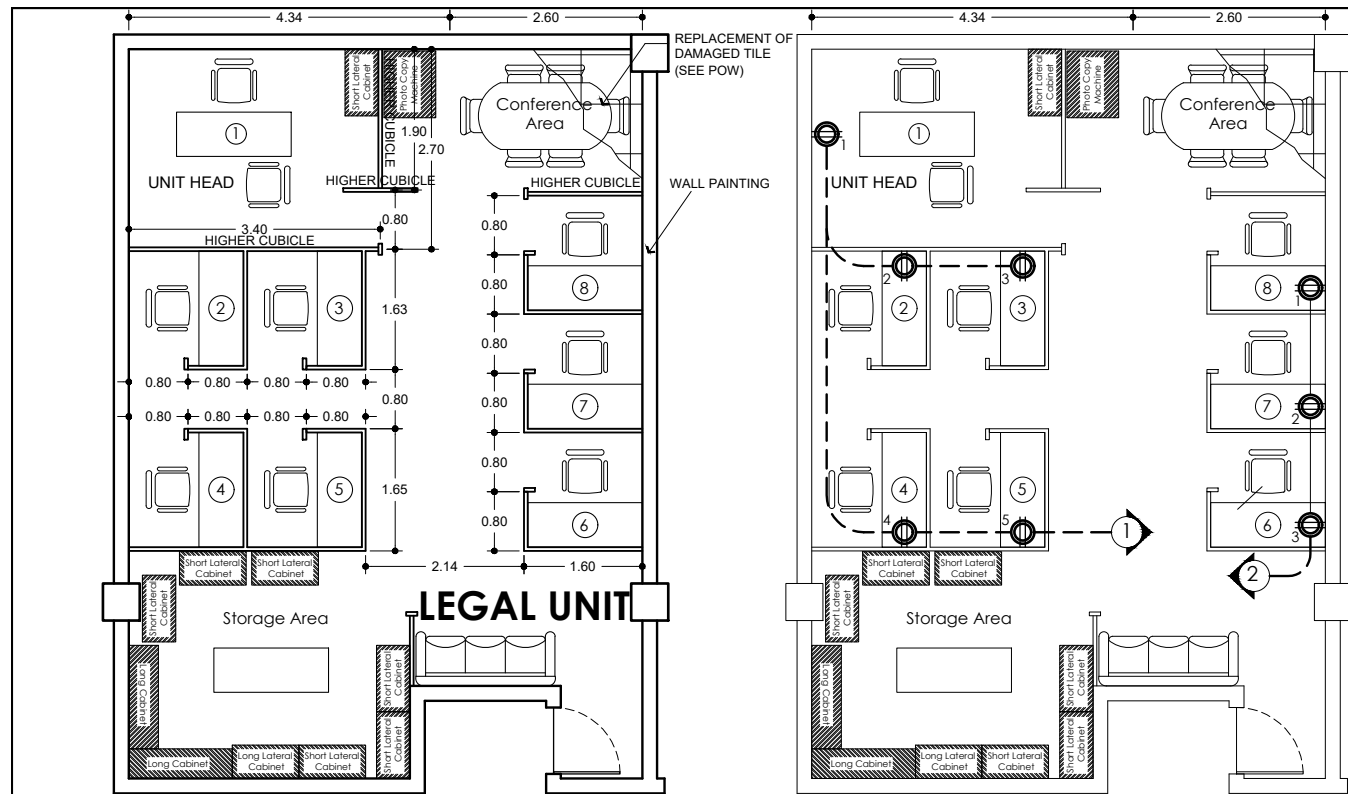
SLAB OPENING LAYOUT
SCALE : 1 : 100 m

CLMD

CHECKED AND NOTED BY:

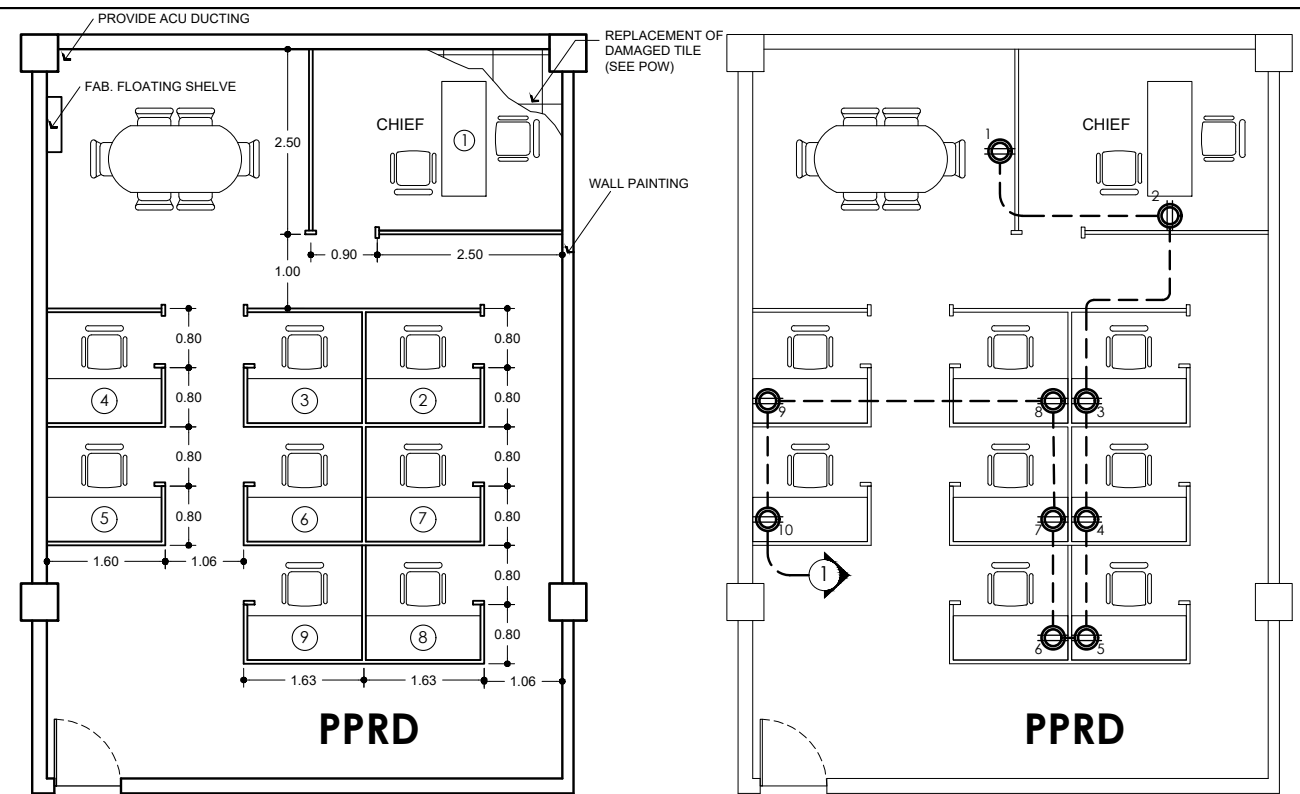
JOB S. ZAPE
Chief Education Program
Supervisor/CLMD

| | | | | | | | |
|---|--|---|--|---|---|--|------------------------------------|
| <div>Republic of the Philippines</div> <div>DepED</div> <div>DEPARTMENT OF EDUCATION</div> <div>REGIONAL OFFICE IV-A (CALABARZON)</div> <div>Karanglan Village, Gate 11, Cainta, Rizal</div> | <div>PREPARED BY:</div> <div>SIGNED</div> <div>EMIL O. REAMBILLO</div> <div>Draftsman II</div> | <div>CHECKED BY:</div> <div>SIGNED</div> <div>ENGR. ROBERT B. PEREZ</div> <div>Engineer III</div> | <div>RECOMMENDING APPROVAL:</div> <div>SIGNED</div> <div>EDUARDA M. ZAPANTA</div> <div>Chief Education Support Services Division</div> | <div>APPROVED:</div> <div>SIGNED</div> <div>WILFREDO E. CABRAL</div> <div>Regional Director Office of the Regional Director</div> | <div>PROJECT:</div> <div>PROPOSED VARIOUS IMPROVEMENT AND REPAIR AT DEPED REGION IV-A</div> | <div>SHEET CONTENTS:</div> <div>OFFICE OF THE ASSISTANT REGIONAL DIRECTOR RENOVATION ADDITIONAL CUBICLE FOR CLMD</div> | <div>SHEET NO.</div> <div>10</div> |
|---|--|---|--|---|---|--|------------------------------------|



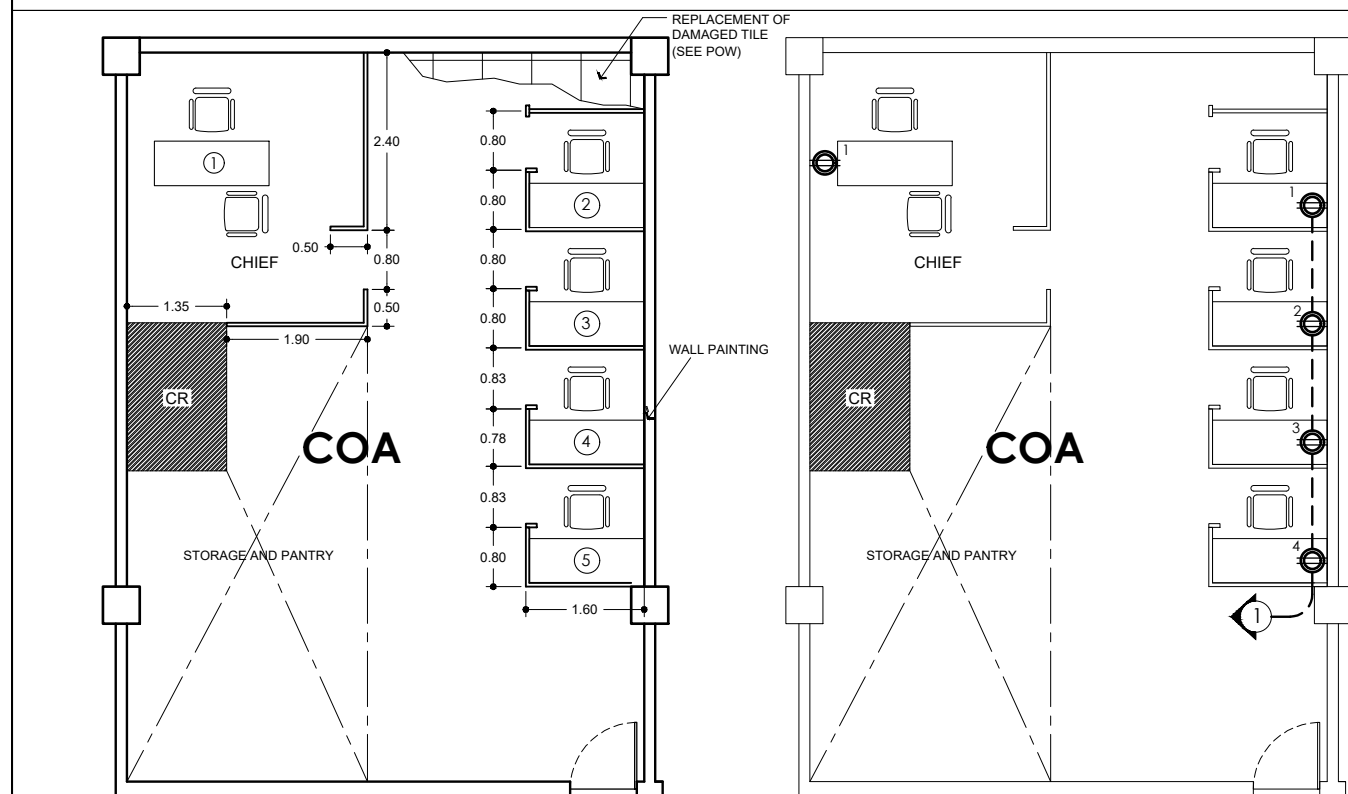
CUBICLE LAYOUT PLAN
SCALE : 1 : 100 m

ELECTRICAL PLAN
SCALE : 1 : 100 m



CUBICLE LAYOUT PLAN
SCALE : 1 : 100 m

ELECTRICAL PLAN
SCALE : 1 : 100 m



CUBICLE LAYOUT PLAN
SCALE : 1 : 100 m

ELECTRICAL PLAN
SCALE : 1 : 100 m

TABLE QUANTITY SUMMARY

| DIVISION | QUANTITY |
|----------|-----------|
| LEGAL | 8 TABLES |
| PPRD | 8 TABLES |
| COA | 4 TABLES |
| TOTAL | 20 TABLES |

SECOND FLOOR LEFT WING CUBICLE PARTITION PLAN

SCALE : 1 : 100 m

LEGAL

CHECKED AND NOTED BY:

JOCELYN BUCLIG
Attorney IV-Legal Unit

PPRD

CHECKED AND NOTED BY:

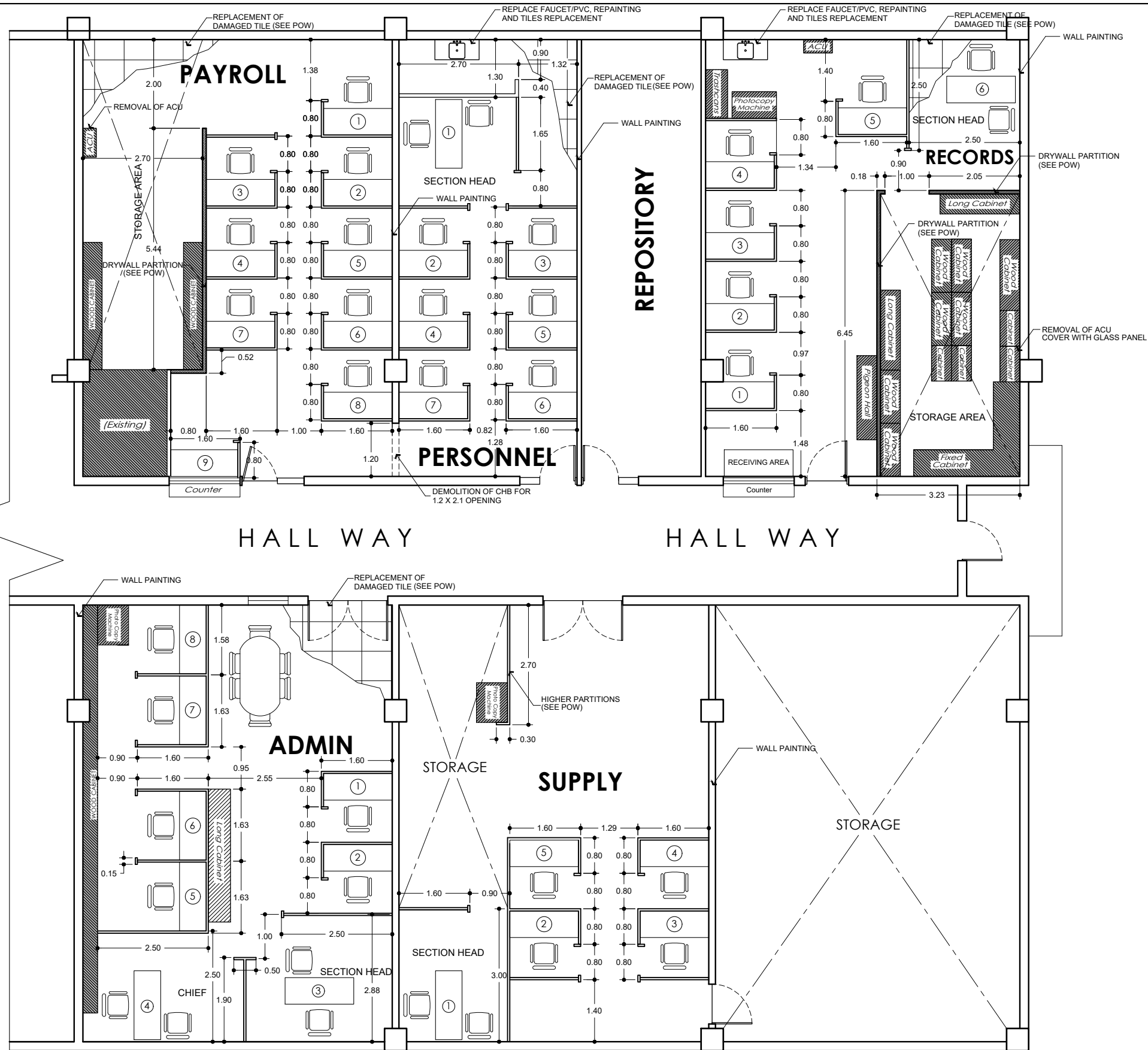
VIERNALYN M. NAMA
Chief Education Program
Supervisor/PPRD

COA

CHECKED AND NOTED BY:

ELISA DC. GURROBAT
S.A. IV

| | | | | | | | |
|---|---|--|---|--|---|---|----------------------------|
| <p>Republic of the Philippines</p> <p>DepED</p> <p>DEPARTMENT OF EDUCATION</p> <p>REGIONAL OFFICE IV-A (CALABARZON)</p> <p>Karakol Village, Gate 11, Cavite, Rizal</p> | <p>PREPARED BY:</p> <p>SIGNED</p> <p>EMIL O. REAMBILLO</p> <p>Draftsman II</p> | <p>CHECKED BY:</p> <p>SIGNED</p> <p>ENGR. ROBERT B. PEREZ</p> <p>Engineer III</p> | <p>RECOMMENDING APPROVAL:</p> <p>SIGNED</p> <p>EDUARDA M. ZAPANTA</p> <p>Chief Education Support Services Division</p> | <p>APPROVED:</p> <p>SIGNED</p> <p>WILFREDO E. CABRAL</p> <p>Regional Director Office of the Regional Director</p> | <p>PROJECT:</p> <p>PROPOSED VARIOUS IMPROVEMENT AND REPAIR AT DEPED REGION IV-A</p> | <p>SHEET CONTENTS:</p> <p>SECOND FLOOR LEFT WING CUBICLE PARTITION PLAN & ELECTRICAL PLAN</p> | <p>SHEET NO.</p> <p>11</p> |
|---|---|--|---|--|---|---|----------------------------|



| TABLE QUANTITY SUMMARY | |
|------------------------|-----------|
| DIVISION | QUANTITY |
| ADMIN | 6 TABLES |
| SUPPLY | 3 TABLES |
| RECORDS | 7 TABLES |
| PERSONNEL | 7 TABLES |
| PAYROLL | 9 TABLES |
| TOTAL | 32 TABLES |

RECORDS

CHECKED AND NOTED BY:

ANGELINA R. MENDIOLA
Supervising Administrative Officer
OIC-RECORDS SECTION

PERSONNEL & PAYROLL

CHECKED AND NOTED BY:

MARIA SUSANA B. OLIVEROS
Administrative Officer V
Section Head

SUPPLY

CHECKED AND NOTED BY:

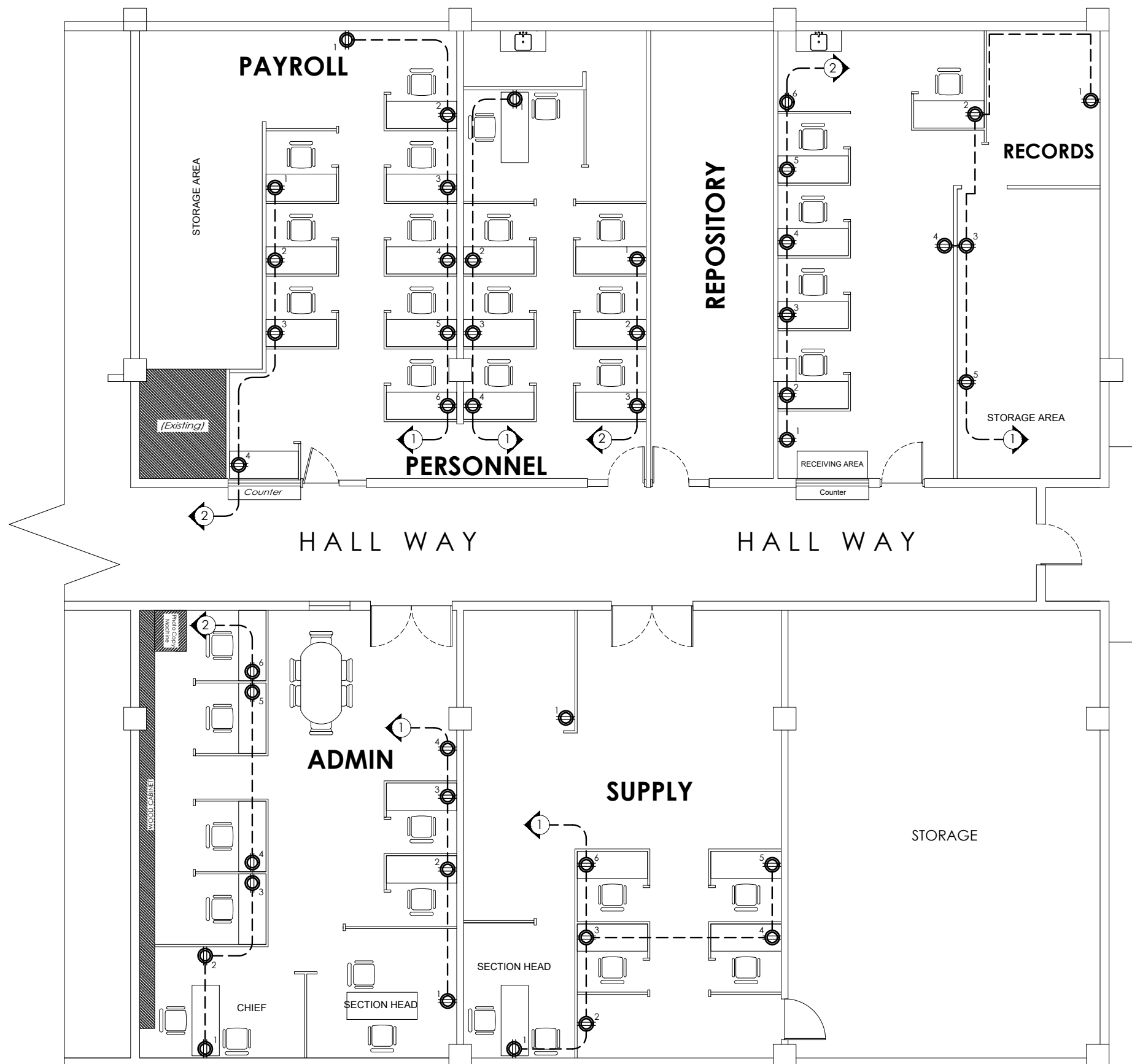
VIRGINIA BAGACAY
Administrative Officer V
Section Head

ADMIN

CHECKED AND NOTED BY:

ANN GERALYN T. PELIAS
Chief Administrative Officer/ADMIN

SECOND FLOOR
RIGHT WING CUBICLE PARTITION PLAN
SCALE : 1 : 100 m



RECORDS

CHECKED AND NOTED BY:

ANGELINA R. MENDIOLA
Supervising Administrative Officer
OIC-RECORDS SECTION

PERSONNEL & PAYROLL

CHECKED AND NOTED BY:

MARIA SUSANA B. OLIVEROS
Administrative Officer V
Section Head

SUPPLY

CHECKED AND NOTED BY:

VIRGINIA BAGACAY
Administrative Officer V
Section Head

ADMIN

CHECKED AND NOTED BY:

ANN GERALYN T. PELIAS
Chief Administrative Officer/ADMIN

SECOND FLOOR RIGHT WING ELECTRICAL PLAN

SCALE : 1 : 100 m

| | | | | | | | |
|---|---|--|---|--|---|---|-----------------------------------|
| <p>Republic of the Philippines</p> <p>DepED</p> <p>DEPARTMENT OF EDUCATION REGIONAL OFFICE IV-A (CALABARZON) Karanglan Village, Gate 11, Cainta, Rizal</p> | <p>PREPARED BY:</p> <p>SIGNED</p> <p>EMIL O. REAMBILLO Draftsman II</p> | <p>CHECKED BY:</p> <p>SIGNED</p> <p>ENGR. ROBERT B. PEREZ Engineer III</p> | <p>RECOMMENDING APPROVAL:</p> <p>SIGNED</p> <p>EDUARDA M. ZAPANTA Chief Education Support Services Division</p> | <p>APPROVED:</p> <p>SIGNED</p> <p>WILFREDO E. CABRAL Regional Director Office of the Regional Director</p> | <p>PROJECT:</p> <p>PROPOSED VARIOUS IMPROVEMENT AND REPAIR AT DEPED REGION IV-A</p> | <p>SHEET CONTENTS:</p> <p>SECOND FLOOR RIGHT WING ELECTRICAL PLAN</p> | <p>SHEET NO.</p> <p>13</p> |
|---|---|--|---|--|---|---|-----------------------------------|