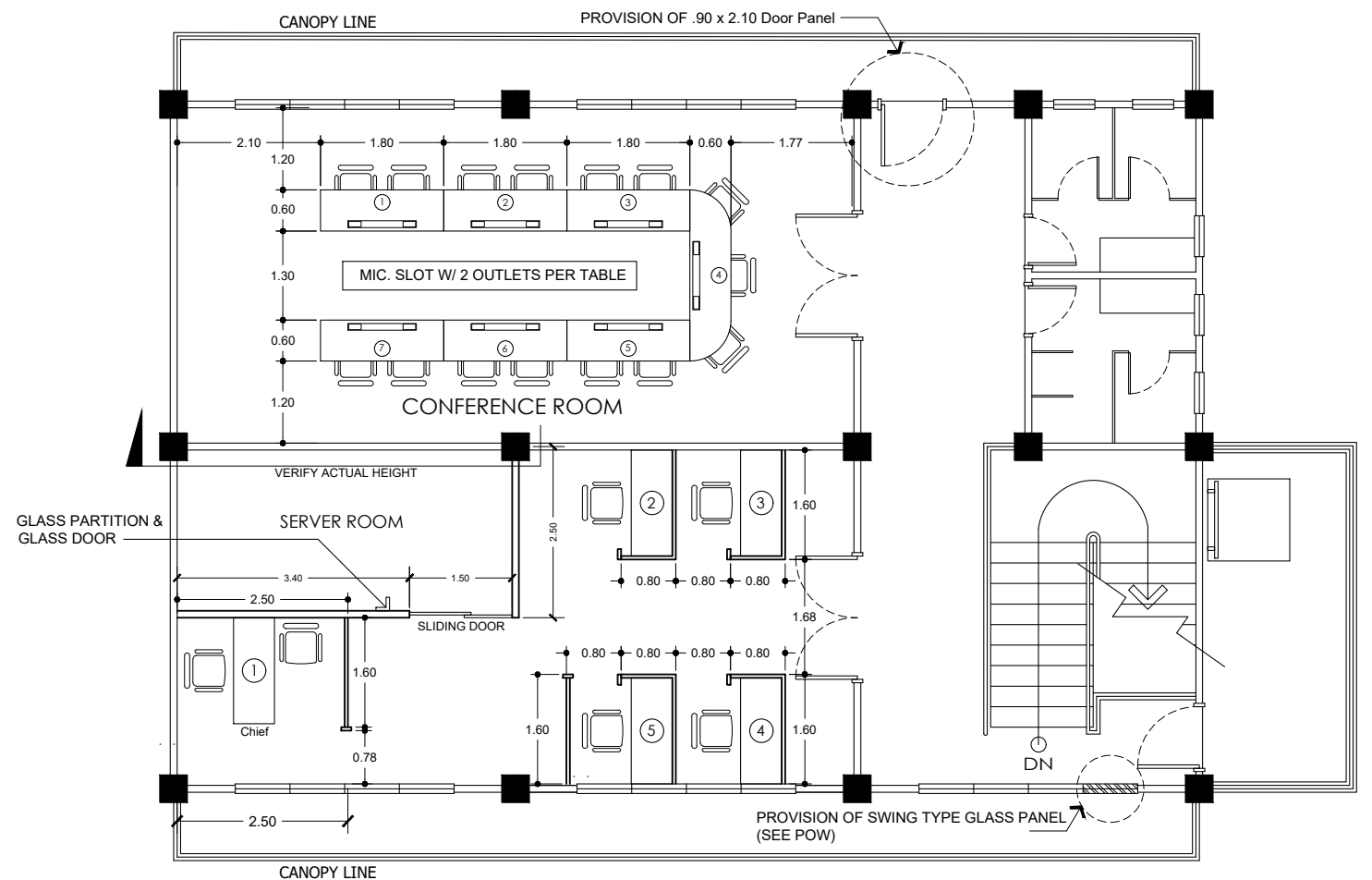


3 STOREY BUILDING
2ND FLOOR CUBICLE LAYOUT
SCALE : 1 : 100 m

HRDD/NEAP

CHECKED AND NOTED BY:

LUZ E. OSMEÑA
Chief Education Program
Supervisor/HRDD



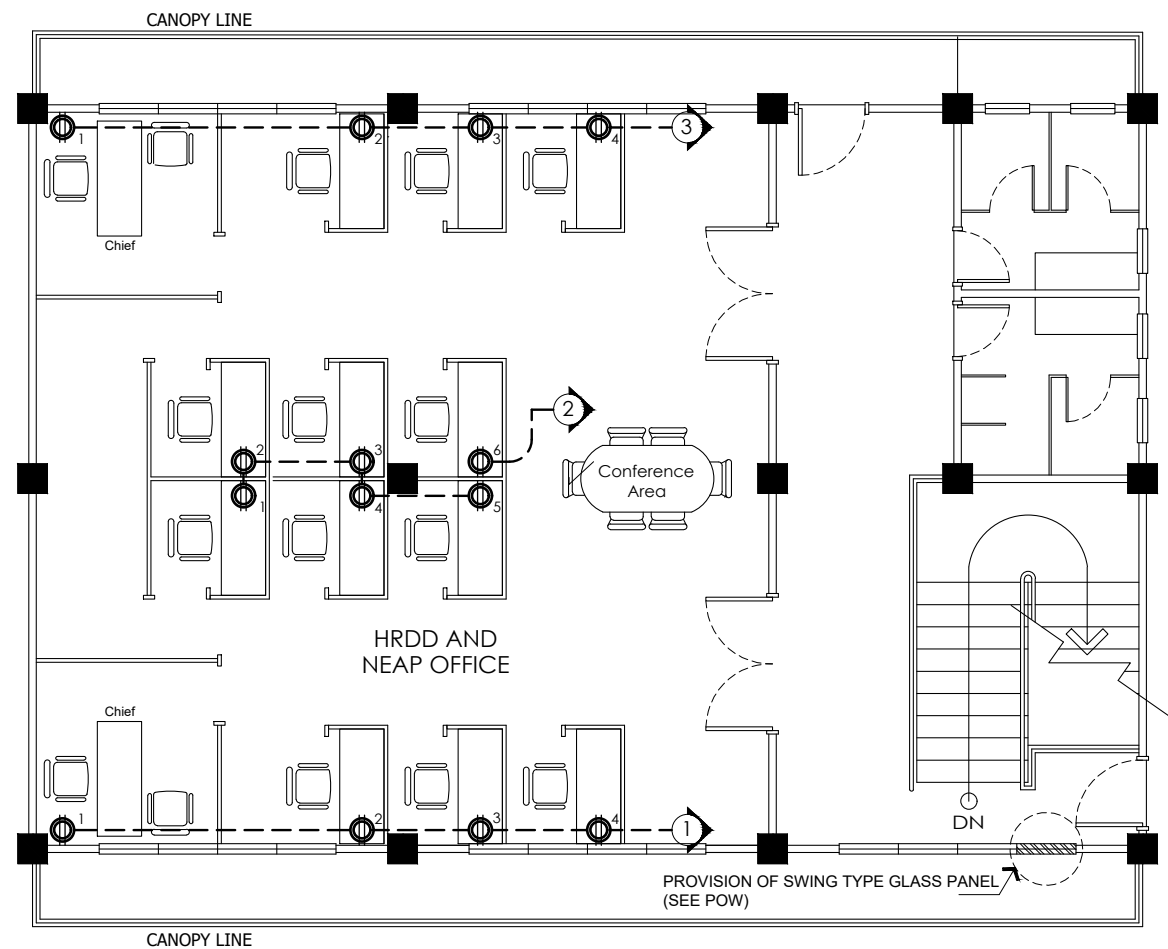
3 STOREY BUILDING
3RD FLOOR CUBICLE LAYOUT
SCALE : 1 : 100 m

ICT

CHECKED AND NOTED BY:

REY VALENZUELA
Information Technology Officer I

| | | | | | | | |
|---|---|--|---|--|---|---|---------------------------|
| <p>Republic of the Philippines</p> <p>DepED</p> <p>DEPARTMENT OF EDUCATION REGIONAL OFFICE IV-A (CALABARZON) Karanglan Village, Gate 11, Cainta, Rizal</p> | <p>PREPARED BY:</p> <p>SIGNED EMIL O. REAMBILLO Draftsman II</p> | <p>CHECKED BY:</p> <p>SIGNED ENGR. ROBERT B. PEREZ Engineer III</p> | <p>RECOMMENDING APPROVAL:</p> <p>SIGNED EDUARDA M. ZAPANTA Chief Education Support Services Division</p> | <p>APPROVED:</p> <p>SIGNED FRANCIS CESAR B. BRINGAS Regional Director Office of the Regional Director</p> | <p>PROJECT:</p> <p>PROPOSED VARIOUS IMPROVEMENT AND REPAIR AT DEPED REGION IV-A</p> | <p>SHEET CONTENTS:</p> <p>2ND FLOOR CUBICLE LAYOUT 3RD FLOOR CUBICLE LAYOUT</p> | <p>SHEET NO.</p> <p>8</p> |
|---|---|--|---|--|---|---|---------------------------|

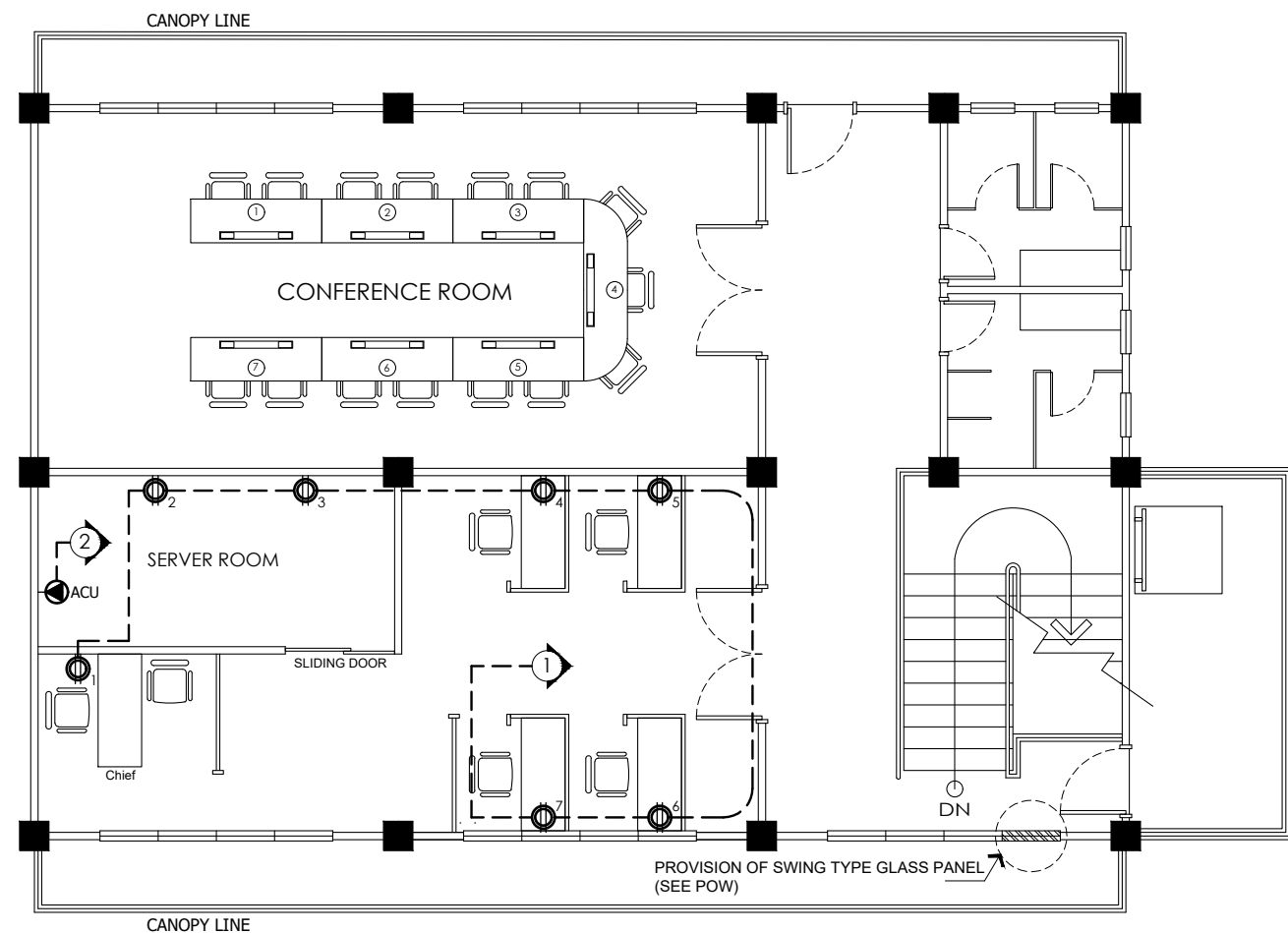


3 STOREY BUILDING
2ND FLOOR ELECTRICAL LAYOUT
SCALE : 1 : 100 m

HRDD/NEAP

CHECKED AND NOTED BY:

LUZ E. OSMEÑA
Chief Education Program
Supervisor/HRDD



3 STOREY BUILDING
3RD FLOOR ELECTRICAL LAYOUT
SCALE : 1 : 100 m

ICT

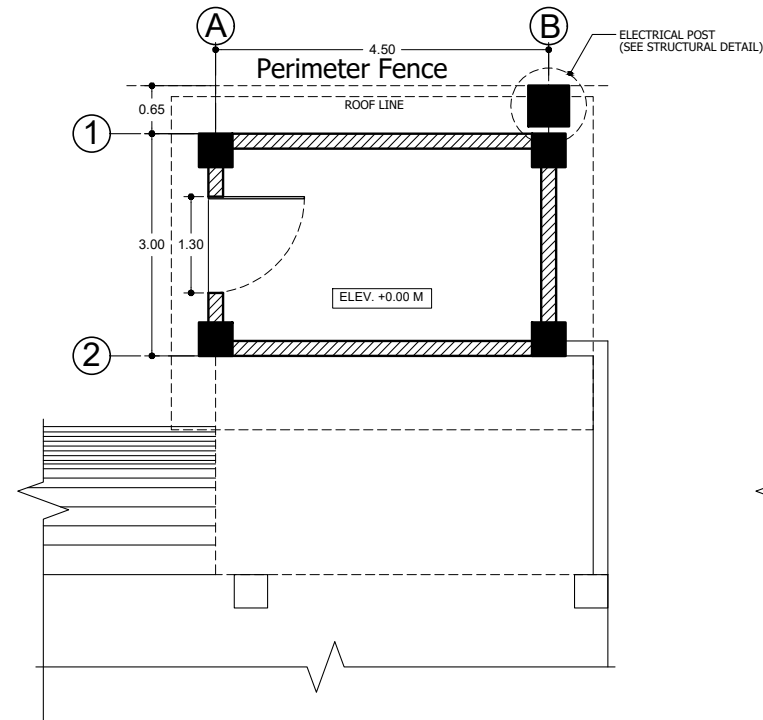
CHECKED AND NOTED BY:

REY VALENZUELA
Information Technology Officer I

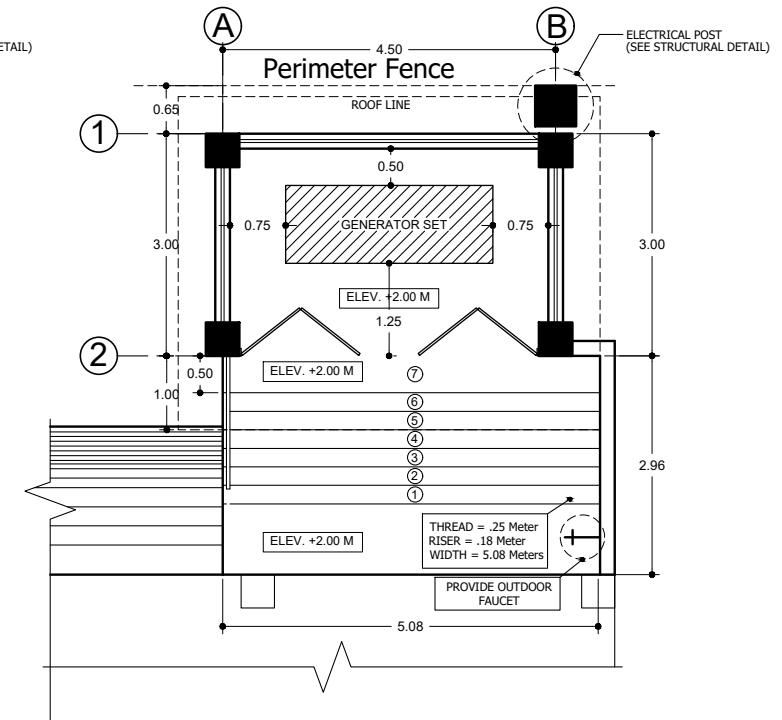
| | | | | | | | |
|---|---|--|---|--|---|---|---------------------------|
| <p>Republic of the Philippines</p> <p>DepED</p> <p>DEPARTMENT OF EDUCATION</p> <p>REGIONAL OFFICE IV-A (CALABARZON)</p> <p>Karanglan Village, Gate 11, Cainta, Rizal</p> | <p>PREPARED BY:</p> <p>SIGNED</p> <p>EMIL O. REAMBILLO</p> <p>Draftsman II</p> | <p>CHECKED BY:</p> <p>SIGNED</p> <p>ENGR. ROBERT B. PEREZ</p> <p>Engineer III</p> | <p>RECOMMENDING APPROVAL:</p> <p>SIGNED</p> <p>EDUARDA M. ZAPANTA</p> <p>Chief Education Support Services Division</p> | <p>APPROVED:</p> <p>SIGNED</p> <p>FRANCIS CESAR B. BRINGAS</p> <p>Regional Director Office of the Regional Director</p> | <p>PROJECT:</p> <p>PROPOSED VARIOUS IMPROVEMENT AND REPAIR AT DEPED REGION IV-A</p> | <p>SHEET CONTENTS:</p> <p>2ND FLOOR ELECTRICAL LAYOUT 3RD FLOOR ELECTRICAL LAYOUT</p> | <p>SHEET NO.</p> <p>9</p> |
|---|---|--|---|--|---|---|---------------------------|



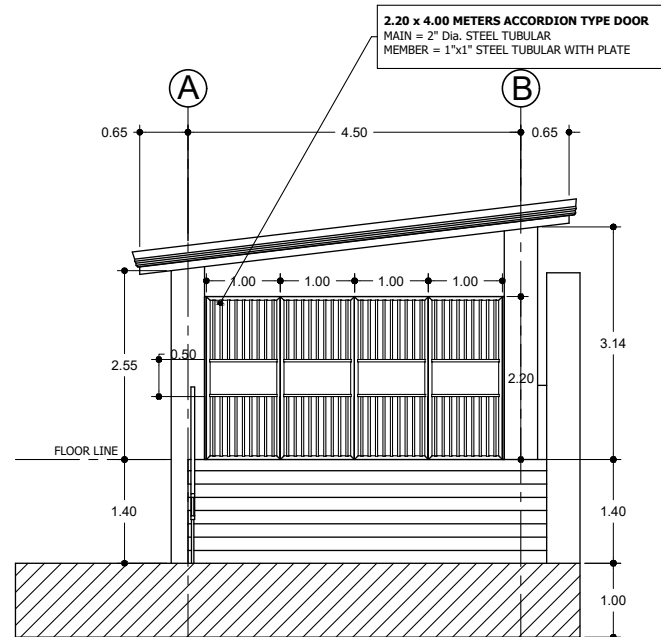
GENERATOR SET HOUSE
PERSPECTIVE DRAWING
NOT TO SCALE



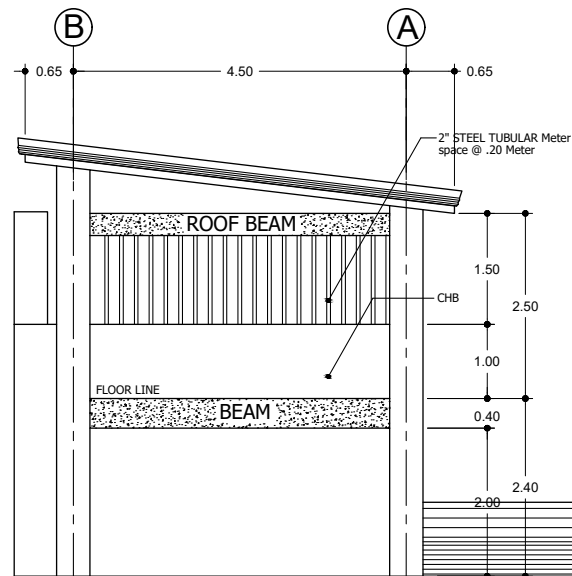
GENERATOR SET HOUSE
GROUND FLOOR PLAN
SCALE : 1 : 50 m



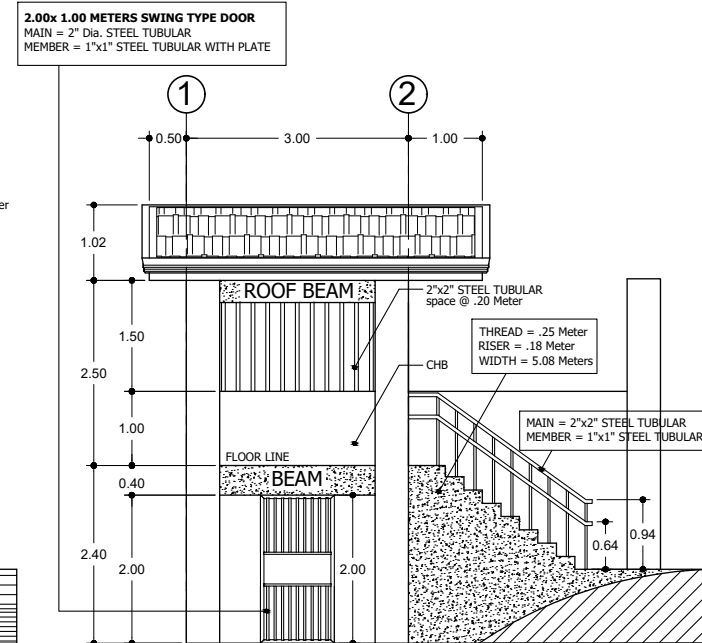
GENERATOR SET HOUSE
SECOND FLOOR PLAN
SCALE : 1 : 50 m



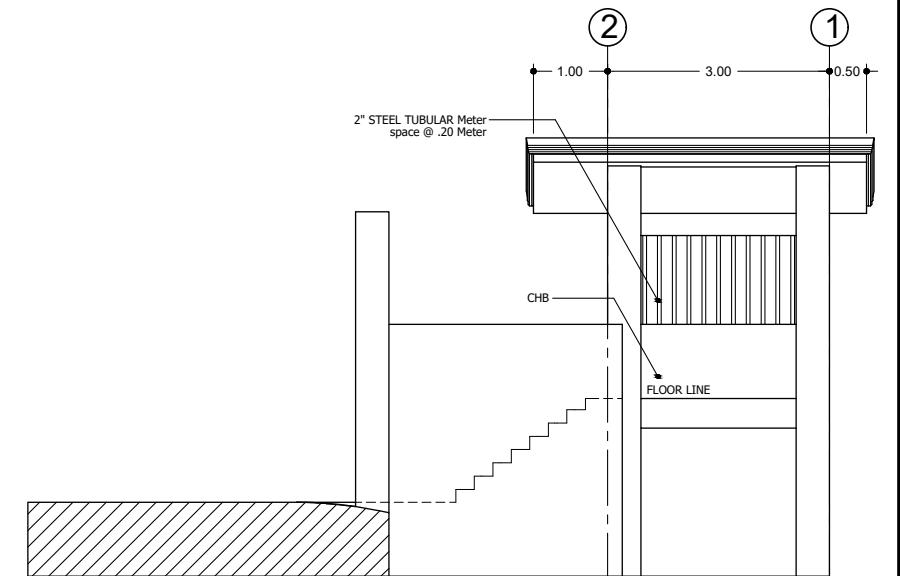
FRONT ELEVATION
SCALE : 1 : 100 m



REAR SIDE ELEVATION
SCALE : 1 : 100 m

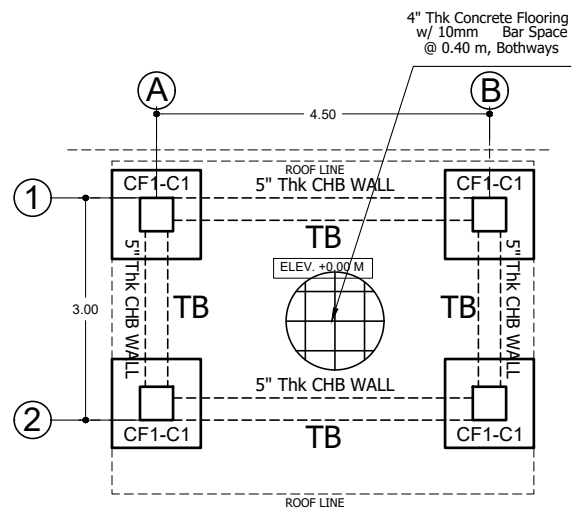


L. SIDE ELEVATION
SCALE : 1 : 100 m

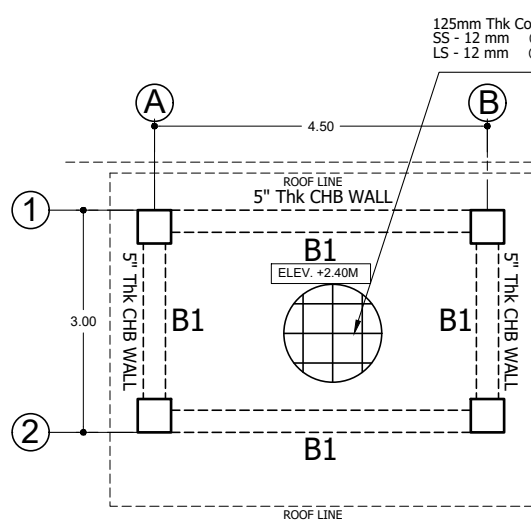


R. SIDE ELEVATION
SCALE : 1 : 100 m

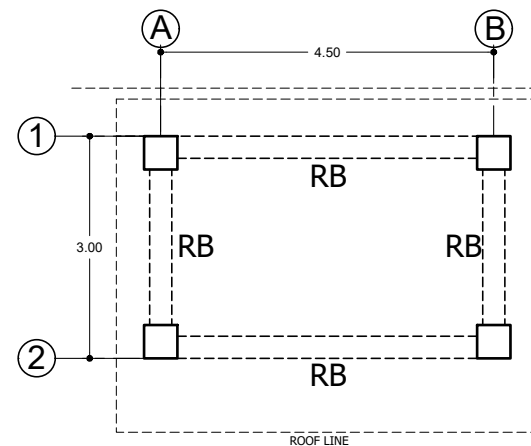
| | | | | | | | |
|--|--|---|--|--|---|---|-----------------------------------|
| <p>Republic of the Philippines</p> <p>DepED</p> <p>DEPARTMENT OF EDUCATION</p> <p>REGIONAL OFFICE IV-A (CALABARZON)</p> <p>Karagligan Village, Gate 11, Cavite, Rizal</p> | <p>PREPARED BY:</p> <p>SIGNED</p> <p>EMIL O. REAMBILLO</p> <p>Draftsman II</p> | <p>CHECKED BY:</p> <p>SIGNED</p> <p>ENGR. ROBERT B. PEREZ</p> <p>Engineer III</p> | <p>RECOMMENDING APPROVAL:</p> <p>SIGNED</p> <p>EDUARDA M. ZAPANTA</p> <p>Chief Education Support Services Division</p> | <p>APPROVED:</p> <p>SIGNED</p> <p>WILFREDO E. CABRAL</p> <p>Regional Director</p> <p>Office of the Regional Director</p> | <p>PROJECT:</p> <p>PROPOSED VARIOUS IMPROVEMENT AND REPAIR AT DEPED REGION IV-A</p> | <p>SHEET CONTENTS:</p> <p>GENERATOR SET HOUSE ARCHITECTURAL PLANS</p> | <p>SHEET NO.</p> <p>14</p> |
|--|--|---|--|--|---|---|-----------------------------------|



FOUNDATION PLAN
SCALE : 1 : 100 m



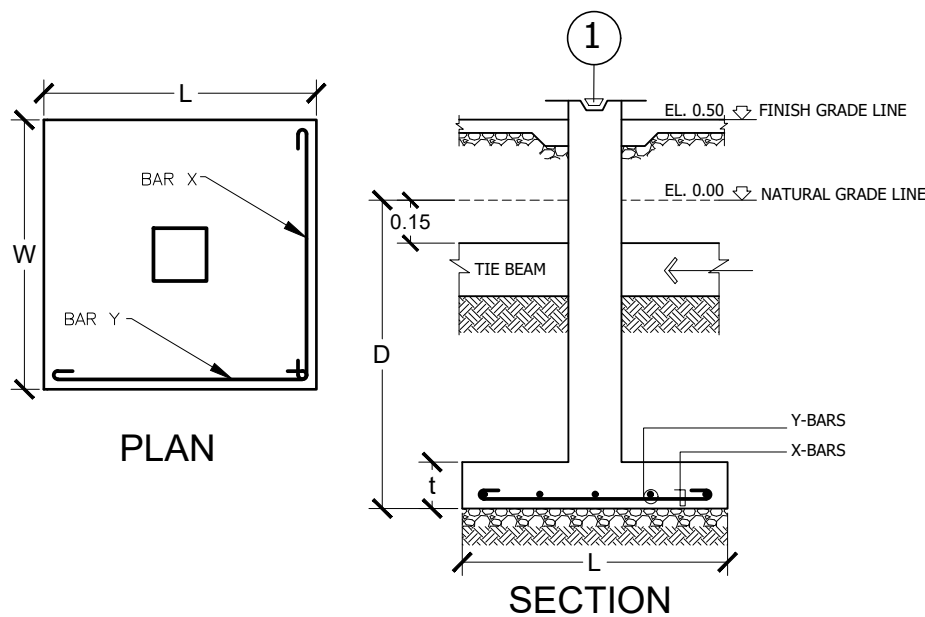
2ND FLOOR FRAMING PLAN
SCALE : 1 : 100 m



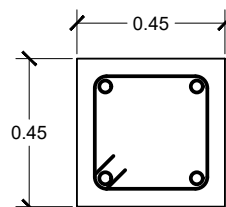
ROOD FRAMING PLAN
SCALE : 1 : 100 m

SCHEDULE OF COLUMN FOOTING

| COLUMN FOOTING MARK | Column Footing Dimensions (mm) | | | | Reinforcement | | | | Remarks |
|---------------------|--------------------------------|-------|-------|-----|------------------|-------|-------|-----------------|---------|
| | Length | Width | Depth | Thk | Bar X | Bar Y | Bar X | Bar Y | |
| CF1 | 1950 | 1950 | 1500 | 250 | 10 - 12mm ϕ | 0 | 0 | 10- 12mm ϕ | 4 SETS |



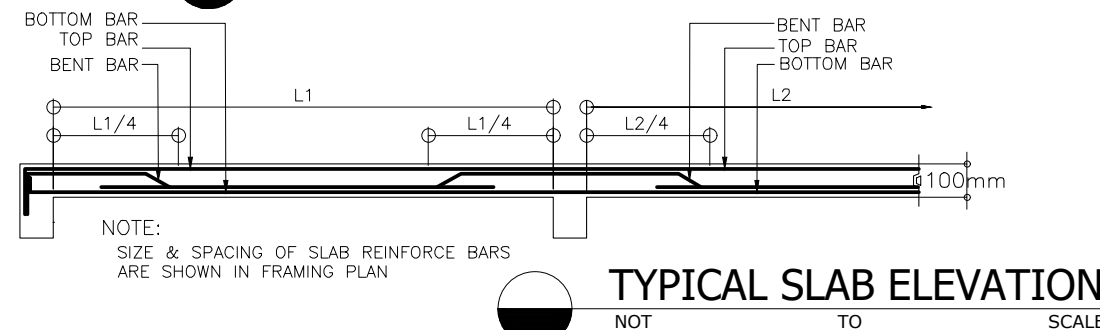
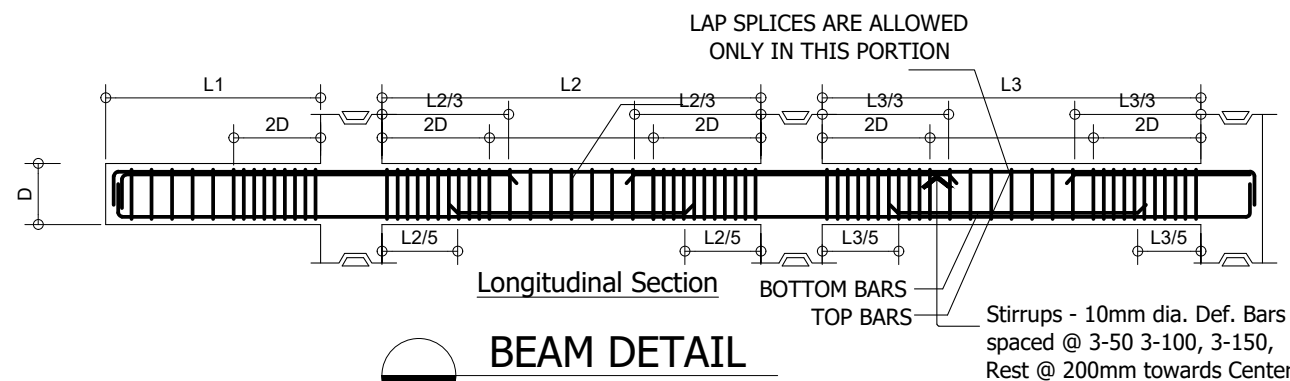
TYPICAL FOOTING DETAIL
NOT TO SCALE



C1
450 x 450 mm Conc. Column with 4pcs - 16 mm dia. Def. Bars, Ties: 10mm dia. Def. Bars spaced @ 3-50 6-100 Rest @ 150mm towards Center

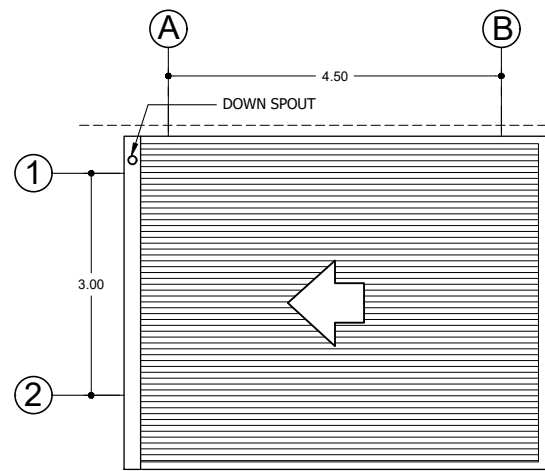
SCHEDULE OF BEAMS

| BEAM MARK | BEAM DIMENSIONS (in / mm) | | STEEL REINFORCEMENTS | | | | | | STIRRUPS (10mm BARS) | |
|-----------|---------------------------|-----|----------------------|-----|-----------|-----|--------|-----|----------------------|------|
| | | | LEFT | | MID. SPAN | | RIGHT | | CONFIGURATION | TYPE |
| | | | | | | | | | | |
| | B | D | REBAR (mm ϕ) | TOP | BOTTOM | TOP | BOTTOM | TOP | BOTTOM | |
| TB | 300 | 400 | ϕ 16mm | 2 | 2 | 2 | 2 | 2 | 2 | I A |
| B1 | 300 | 400 | ϕ 16mm | 5 | 2 | 2 | 3 | 5 | 2 | I A |
| RB | 200 | 300 | ϕ 12mm | 2 | 2 | 2 | 2 | 2 | 2 | I A |

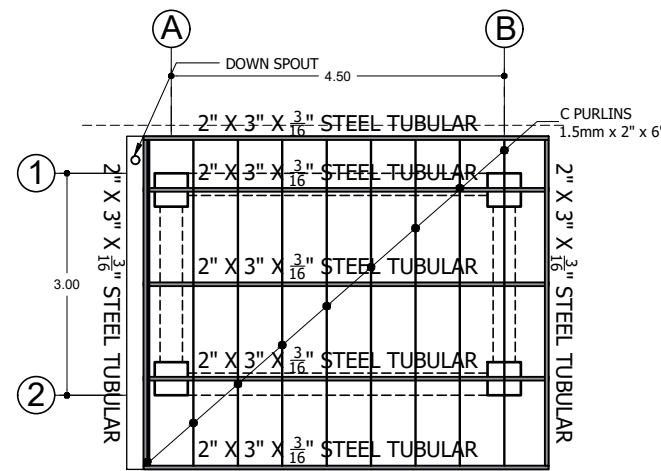


NOTE:
SIZE & SPACING OF SLAB REINFORCE BARS ARE SHOWN IN FRAMING PLAN

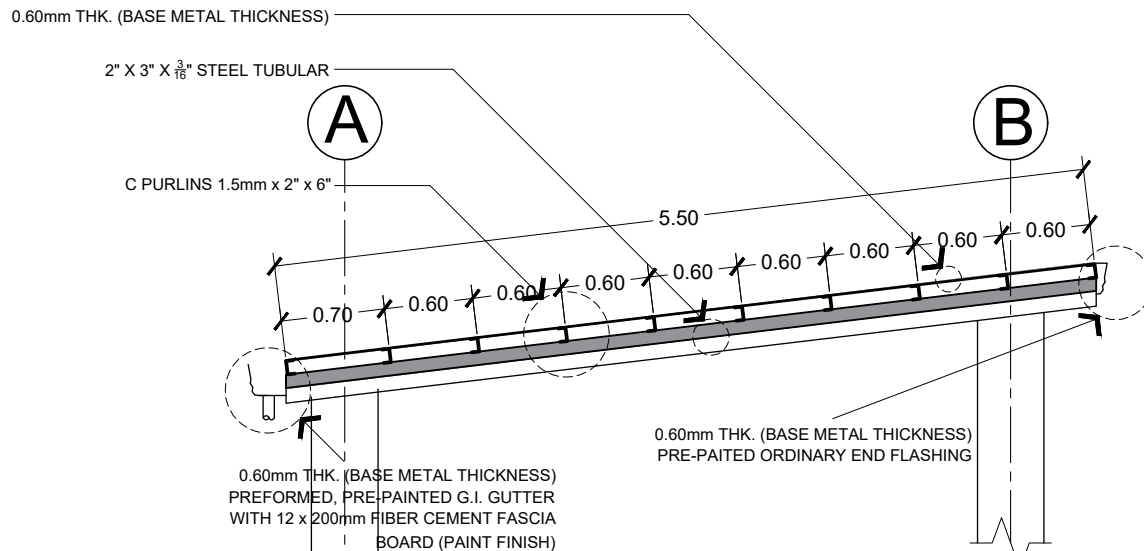
TYPICAL SLAB ELEVATION
NOT TO SCALE



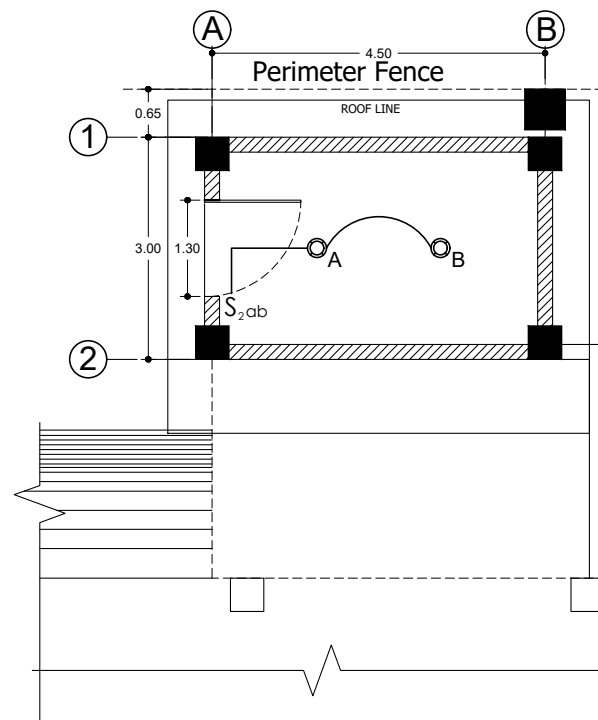
ROOD PLAN
SCALE : 1 : 100 m



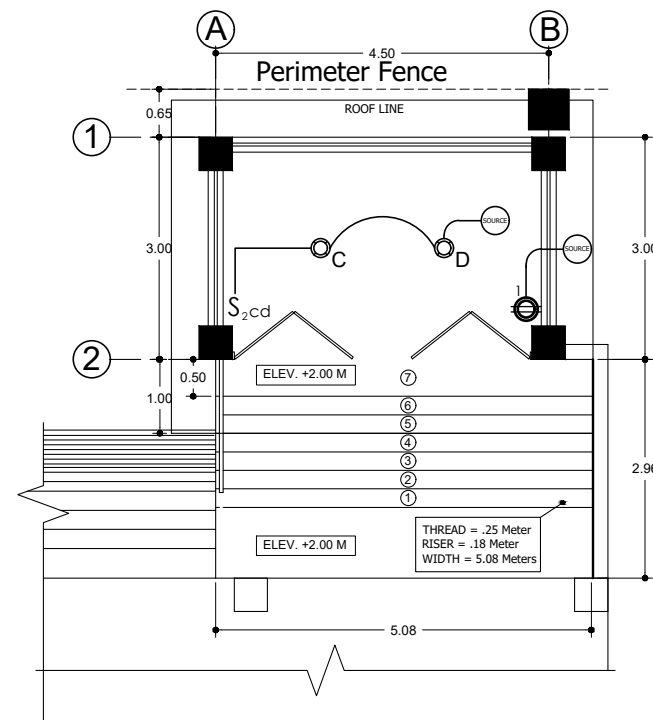
ROOF FRAMING PLAN
SCALE : 1 : 100 m



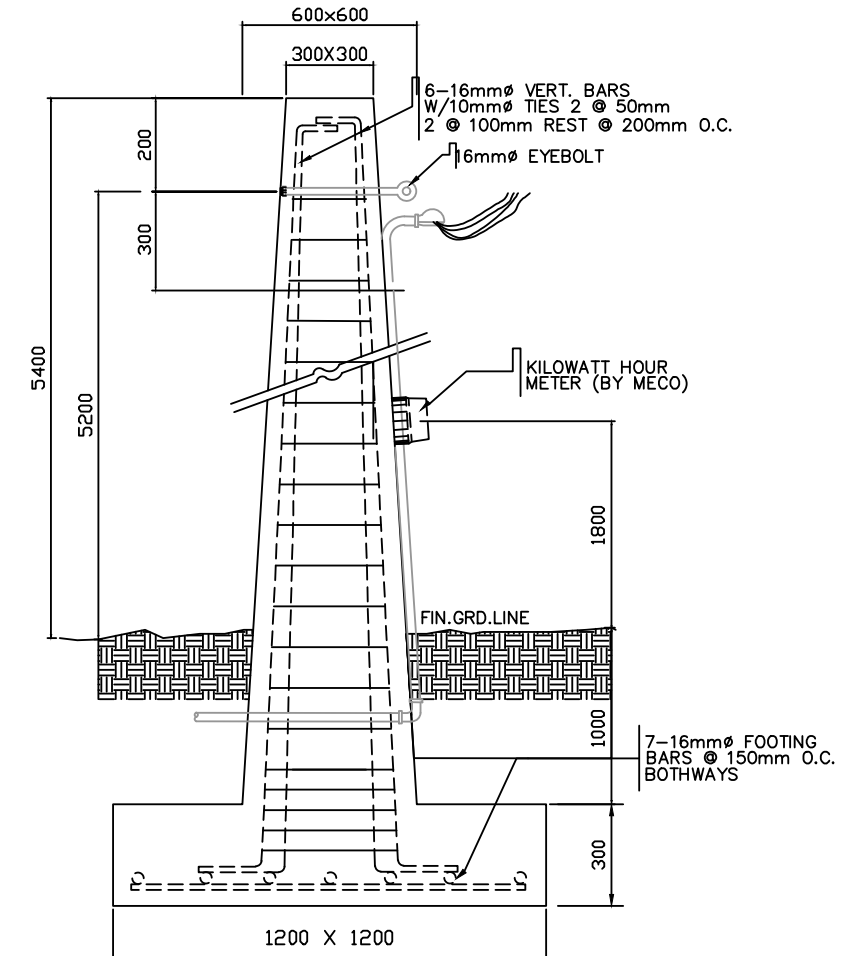
ROOF FRAMING ELEVATION
SCALE : 1 : 50 m



**GEN SET HOUSE
GROUND FLOOR
ELECTRICAL PLAN**
SCALE : 1 : 100 m



**GEN SET HOUSE
SECOND FLOOR
ELECTRICAL PLAN**
SCALE : 1 : 100 m



ELECTRICAL POST STRUCTURAL DETAIL
SCALE : 1 : 100 m

| | | | | | | | |
|--|--|---|--|---|---|---|-----------------------------------|
| <p>Republic of the Philippines</p> <p>DepED</p> <p>DEPARTMENT OF EDUCATION REGIONAL OFFICE IV-A (CALABARZON) Karanglan Village, Gate 11, Carina, Raul</p> | <p>PREPARED BY:</p> <p>SIGNED EMIL O. REAMBILLO Draftsman II</p> | <p>CHECKED BY:</p> <p>SIGNED ENGR. ROBERT B. PEREZ Engineer III</p> | <p>RECOMMENDING APPROVAL:</p> <p>SIGNED EDUARDA M. ZAPANTA Chief Education Support Services Division</p> | <p>APPROVED:</p> <p>SIGNED WILFREDO E. CABRAL Regional Director Office of the Regional Director</p> | <p>PROJECT:</p> <p>PROPOSED VARIOUS IMPROVEMENT AND REPAIR AT DEPED REGION IV-A</p> | <p>SHEET CONTENTS:</p> <p>ROOD PLAN ROOF FRAMING PLAN ROOF FRAMING ELEVATION GEN. SET HOUSE ELECTRICAL PLAN ELECTRICAL POST STRUCTURAL DETAIL</p> | <p>SHEET NO.</p> <p>16</p> |
|--|--|---|--|---|---|---|-----------------------------------|